

IGI IDENTIFICATION REPORT

LG375951777Report verification at igionline.comSCIENTIFIC LABORATORY FOR THE IDENTIFICATION AND GRADING
OF DIAMONDS AND COLORED STONES

EDUCATIONAL PROGRAMS

IGI GEMOLOGICAL REPORT

IGI LABORATORY GROWN DIAMOND GRADING REPORT

July 19, 2019

IGI Report Number

LG375951777

Shape and Cutting Style

PEAR BRILLIANT

Measurements

7.34 X 5.33 X 3.47 MM

GRADING RESULTS

Carat Weight

0.88 Carat

Color Grade

D

Clarity Grade

VS 1

ADDITIONAL GRADING INFORMATION

Polish

VERY GOOD

Symmetry

VERY GOOD

Fluorescence

NONE

Inscription(s)

LABGROWN IGI LG375951777

ADDITIONAL INFORMATION

PROPORTIONS

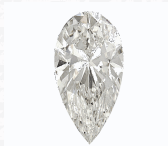
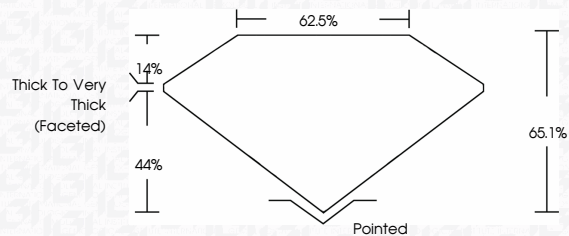


PHOTO ENLARGED

LASERSCRIBE SM

GRADING SCALES

COLOR GRADING SCALE	CL COLORLESS D-F	NC NEAR COLORLESS G-J	FT FAINT K-M	VLT VERY LIGHT N-R	LT LIGHT S-Z	
CLARITY (10x) GRADING SCALE	FL FLAWLESS INTERNALLY FLAWLESS	IF FLAWLESS SLIGHTLY INCLUDED	VVS VERY VERY SLIGHTLY INCLUDED	VS VERY SLIGHTLY INCLUDED	SI SLIGHTLY INCLUDED	I INCLUDED

The Laboratory Grown Diamond (LGD) described in this Report has been analyzed, graded, and Laserscribed® by International Gemological Institute (IGI). A LGD has essentially the same chemical, physical and optical properties as a mined diamond, with the exception of being man-made (a manufactured product). LGDs are typically produced by CVD (chemical vapor deposition) or by HPHT (high pressure high temperature) growth processes and may include post-growth modifications to change the color. IGI utilizes the most advanced techniques and equipment currently available including, binocular microscopes, diamond color masters, non-contact-optical measuring devices, a wide range of analytical techniques including FTIR, UV-VIS-NIR, raman spectroscopy, and fluorescence analysis at various excitation wavelengths. The Report includes advanced security features. This Report is neither a guarantee, valuation nor appraisal and by making this report IGI does not agree to purchase or replace the article.
FOR TERMS AND CONDITIONS PLEASE VISIT WWW.IGI.ORG

© INTERNATIONAL GEMOLOGICAL INSTITUTE, INC.

The gemstone described in this Identification Report ("Report") has been identified, authenticated, graded, tested, analyzed, examined and/or inscribed by International Gemological Institute ("IGI"). IGI employs and utilizes those techniques and equipment currently available to IGI, including, without limitation, 10x magnification, connected triplet loupe, stereo zoom binocular microscope, refractometer, spectrometer, polariscope, non-contact optical measuring device, and such other instruments and/or processes as deemed appropriate by IGI. This Report includes advanced security features. A duly accredited gemologist or jeweler can advise you with respect to the importance of and interrelationship between cut, color, clarity and carat weight.
THIS REPORT IS NEITHER A GUARANTEE, VALUATION, NOR APPRAISAL OF THE GEMSTONE DESCRIBED HEREIN. PLEASE REVIEW THE LIMITATIONS AND RESTRICTIONS SET FORTH ONLINE. FOR ADDITIONAL INFORMATION, IMPORTANT LIMITATIONS AND DISCLAIMERS, PLEASE GO TO WWW.IGIONLINE.COM OR CALL 1-888-BUY-IGI. ©2016 IGI



THIS DOCUMENT WAS PRODUCED WITH THE FOLLOWING SECURITY MEASURES: SPECIAL DOCUMENT PAPER, INK SECURITY, BACKGROUND DESIGNS, HOLOGRAM AND OTHER SECURITY FEATURES NOT LISTED AND DO EXCEED DOCUMENT SECURITY.

