



**LG451076355**

**IGI LABORATORY GROWN  
DIAMOND ID REPORT**

12/01/2020

IGI Report Number **LG451076355**

**ROUND BRILLIANT**

**4.62 - 4.65 X 2.81 MM**

Carat Weight	0.37 CARAT
Color Grade	D
Clarity Grade	VVS 2
Cut Grade	IDEAL
Polish	EXCELLENT
Symmetry	EXCELLENT
Fluorescence	NONE
Inscription(s)	LABGROWN IGI LG451076355

Comments: This Laboratory Grown Diamond was created by high pressure high temperature process (HPHT).  
Type II

**IGI GEMOLOGICAL REPORT**

**IGI LABORATORY GROWN DIAMOND IDENTIFICATION REPORT**

12/01/2020  
IGI Report Number **LG451076355**  
Shape and Cutting Style **ROUND BRILLIANT**  
Measurements **4.62 - 4.65 X 2.81 MM**

**GRADING RESULTS**

Carat Weight **0.37 CARAT**  
Color Grade **D**  
Clarity Grade **VVS 2**  
Cut Grade **IDEAL**

**ADDITIONAL GRADING INFORMATION**

Polish **EXCELLENT**  
Symmetry **EXCELLENT**  
Fluorescence **NONE**  
Inscription(s) **LABGROWN IGI LG451076355**

Comments: This Laboratory Grown Diamond was created by high pressure high temperature process (HPHT).  
Type II



**ADDITIONAL INFORMATION**

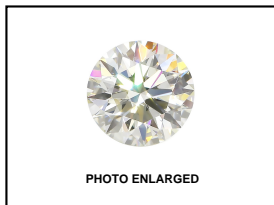
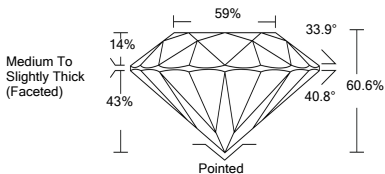


PHOTO ENLARGED



**LABGROWN IGI LG451076355**

**LASERSCRIBE SM**



**IGI LABORATORY GROWN  
DIAMOND ID REPORT**

12/01/2020

IGI Report Number **LG451076355**

**ROUND BRILLIANT**

**4.62 - 4.65 X 2.81 MM**

Carat Weight	0.37 CARAT
Color Grade	D
Clarity Grade	VVS 2
Cut Grade	IDEAL
Polish	EXCELLENT
Symmetry	EXCELLENT
Fluorescence	NONE
Inscription(s)	LABGROWN IGI LG451076355

Comments: This Laboratory Grown Diamond was created by high pressure high temperature process (HPHT).  
Type II



THE DOCUMENT WAS PRODUCED WITH THE FOLLOWING SECURITY MEASURES: SPECIAL DOCUMENT PAPER, INK SCREENS, WATERMARK BACKGROUND DESIGNS HOLOGRAM AND OTHER SECURITY FEATURES NOT LISTED AND DO EXCEED DOCUMENT SECURITY INDUSTRY GUIDELINES