



480143159

**DIAMOND REPORT**

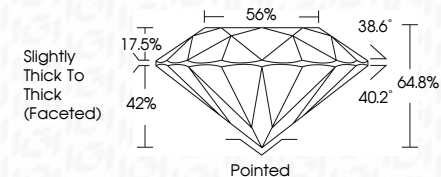
**ELECTRONIC COPY**



July 13, 2022  
IGI Report Number 480143159  
Description NATURAL DIAMOND  
Shape and Cutting Style ROUND BRILLIANT  
Measurements 6.18 - 6.24 x 4.03 mm

**GRADING RESULTS**

Carat Weight 1.00 CARAT  
Color Grade L  
Clarity Grade VVS 1  
Cut Grade VERY GOOD



July 13, 2022  
IGI Report Number 480143159  
Description NATURAL DIAMOND  
Shape and Cutting Style ROUND BRILLIANT  
Measurements 6.18 - 6.24 x 4.03 mm

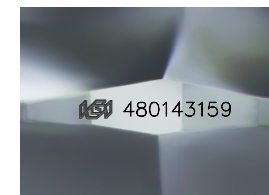
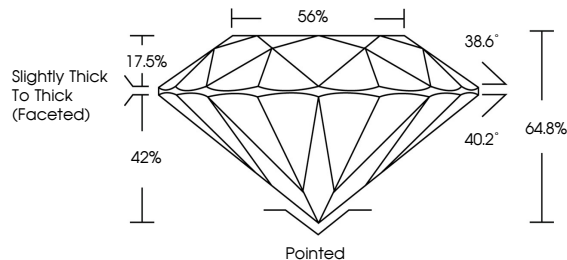
**GRADING RESULTS**

Carat Weight 1.00 CARAT  
Color Grade L  
Clarity Grade VVS 1  
Cut Grade VERY GOOD

**ADDITIONAL GRADING INFORMATION**

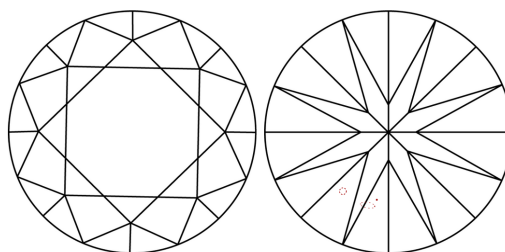
Polish EXCELLENT  
Symmetry EXCELLENT  
Fluorescence NONE  
Inscription(s) IGI 480143159

**PROPORTIONS**



Sample Image Used

**CLARITY CHARACTERISTICS**



**KEY TO SYMBOLS**

Red symbols indicate internal characteristics.  
Green symbols indicate external characteristics.

**COLOR**

D - F	G - J	K - M	N - R	S - Z	FANCY
Colorless	Near Colorless	Slightly Tinted	Very Light Color	Light Color	

**CLARITY**

IF	VS <sup>1-2</sup>	VS <sup>1-2</sup>	SI <sup>1-2</sup>	I <sup>1-3</sup>
Internally Flawless	Very Very Slightly Included	Very Slightly Included	Slightly Included	Included

**ADDITIONAL GRADING INFORMATION**

Polish EXCELLENT  
Symmetry EXCELLENT  
Fluorescence NONE  
Inscription(s) IGI 480143159



**IGI**



July 13, 2022  
IGI Report No 480143159  
NATURAL DIAMOND  
ROUND BRILLIANT  
6.18 - 6.24 x 4.03 mm  
Carat Weight 1.00 CARAT  
Color Grade L  
Clarity Grade VVS 1  
Cut Grade VERY GOOD  
Depth 64.8%  
Table 56%  
Girdle Slightly Thick To Thick (Faceted)  
Culet Pointed  
Polish EXCELLENT  
Symmetry EXCELLENT  
Fluorescence NONE  
Inscription(s) IGI 480143159

