

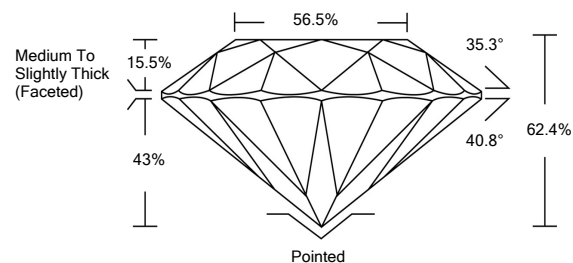


**ELECTRONIC COPY**

**LABORATORY GROWN DIAMOND REPORT**

LG514253285

**PROPORTIONS**



**GRADING SCALES**

| COLOR GRADING SCALE         | CL                           | NC                          | FT                     | VL                | LT        |   |
|-----------------------------|------------------------------|-----------------------------|------------------------|-------------------|-----------|---|
|                             | COLORLESS D-F                | NEAR COLORLESS G-J          | FAINT K-M              | VERY LIGHT N-R    | LIGHT S-Z |   |
| CLARITY (10x) GRADING SCALE | FL                           | IF                          | VVS                    | VS                | SI        | I |
|                             | FLAWLESS INTERNALLY FLAWLESS | VERY VERY SLIGHTLY INCLUDED | VERY SLIGHTLY INCLUDED | SLIGHTLY INCLUDED | INCLUDED  |   |

February 4, 2022

IGI Report Number

**LG514253285**

Description

**LABORATORY GROWN  
DIAMOND**

Shape and Cutting Style

**ROUND BRILLIANT**

Measurements

**6.97 - 7.02 X 4.37 MM**

**GRADING RESULTS**

Carat Weight

**1.32 CARAT**

Color Grade

**D**

Clarity Grade

**VVS 2**

Cut Grade

**IDEAL**

February 4, 2022

IGI Report Number

**LG514253285**

Description

**LABORATORY GROWN  
DIAMOND**

Shape and Cutting Style

**ROUND BRILLIANT**

Measurements

**6.97 - 7.02 X 4.37 MM**

**GRADING RESULTS**

Carat Weight

**1.32 CARAT**

Color Grade

**D**

Clarity Grade

**VVS 2**

Cut Grade

**IDEAL**

**ADDITIONAL GRADING INFORMATION**

Polish

**EXCELLENT**

Symmetry

**EXCELLENT**

Fluorescence

**NONE**

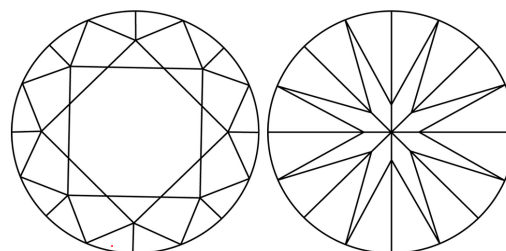
Inscription(s)

**LABGROWN IGI LG514253285**

Comments: As Grown - No indication of post-growth treatment.

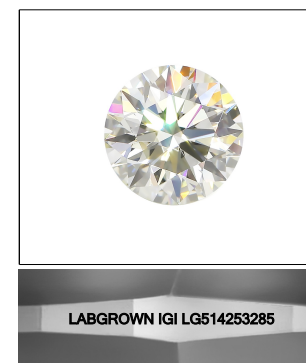
This Laboratory Grown Diamond was created by High Pressure High Temperature (HPHT) growth process. Type II

**CLARITY CHARACTERISTICS**



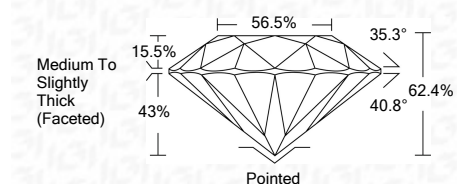
**KEY TO SYMBOLS**

Red symbols indicate internal characteristics.  
Green symbols indicate external characteristics.



**LASERSCRIBE<sup>SM</sup>**

Sample Image Used



**ADDITIONAL GRADING INFORMATION**

Polish

**EXCELLENT**

Symmetry

**EXCELLENT**

Fluorescence

**NONE**

Inscription(s)

**LABGROWN IGI LG514253285**

Comments: As Grown - No indication of post-growth treatment.  
This Laboratory Grown Diamond was created by High Pressure High Temperature (HPHT) growth process. Type II



**IGI**

|                            |  |              |              |
|----------------------------|--|--------------|--------------|
| IGI Report No. LG514253285 | 1.32 CARAT   | D            | Pointed      |
| ROUND BRILLIANT            | VVS 2  | EXCELLENT    | EXCELLENT    |
| 6.97 - 7.02 X 4.37 MM      | IDEAL  | EXCELLENT    | EXCELLENT    |
| Carat Weight               | 62.4%  | NONE         | NONE         |
| Color Grade                | 56.5%  | LABGROWN IGI | LABGROWN IGI |
| Clarity Grade              | Medium To Slightly Thick (Faceted)   | LSH-H62626   | LSH-H62626   |
| Cut Grade                  |  |              |              |
| Depth                      |  |              |              |
| Table                      |  |              |              |
| Grille                     |  |              |              |
| Culet                      |  |              |              |
| Polish                     |  |              |              |
| Symmetry                   |  |              |              |
| Fluorescence               |  |              |              |
| Inscription(s)             |  |              |              |
| Comments:                  | As Grown - No indication of post-growth treatment.<br>This Laboratory Grown Diamond was created by High Pressure High Temperature (HPHT) growth process. Type II |              |              |