



**ELECTRONIC COPY**

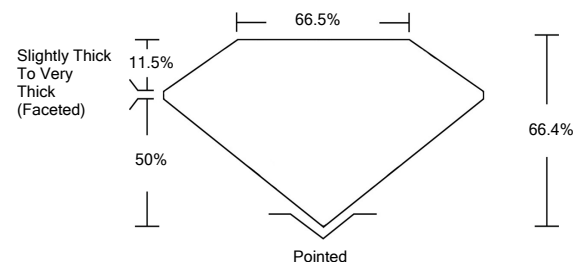
**LABORATORY GROWN DIAMOND REPORT**

LG517202141

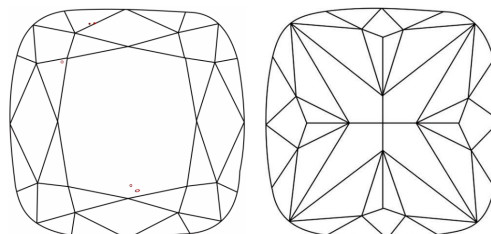
**GRADING SCALES**

|                             |                              |                             |                        |                   |           |   |
|-----------------------------|------------------------------|-----------------------------|------------------------|-------------------|-----------|---|
| COLOR GRADING SCALE         | CL                           | NC                          | FT                     | VLT               | LT        |   |
|                             | COLORLESS D-F                | NEAR COLORLESS G-J          | FAINT K-M              | VERY LIGHT N-R    | LIGHT S-Z |   |
| CLARITY (10x) GRADING SCALE | FL                           | IF                          | VVS                    | VS                | SI        | I |
|                             | FLAWLESS INTERNALLY FLAWLESS | VERY VERY SLIGHTLY INCLUDED | VERY SLIGHTLY INCLUDED | SLIGHTLY INCLUDED | INCLUDED  |   |

**PROPORTIONS**

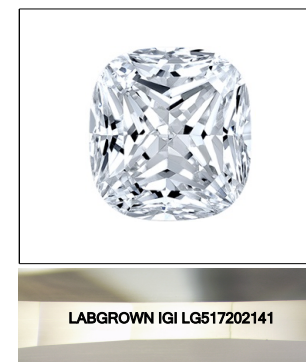


**CLARITY CHARACTERISTICS**



**KEY TO SYMBOLS**

Red symbols indicate internal characteristics.  
Green symbols indicate external characteristics.



**LASERSCRIBE<sup>SM</sup>**

Sample Image Used

February 23, 2022

IGI Report Number

**LG517202141**

Description

**LABORATORY GROWN  
DIAMOND**

Shape and Cutting Style

**SQUARE CUSHION  
BRILLIANT**

Measurements

**6.66 X 6.57 X 4.36 MM**

**GRADING RESULTS**

Carat Weight

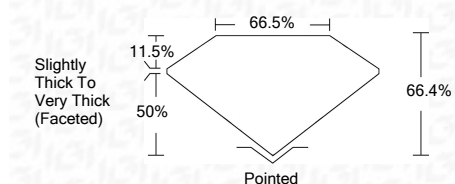
**1.50 CARAT**

Color Grade

**D**

Clarity Grade

**VS 2**



**ADDITIONAL GRADING INFORMATION**

Polish

**EXCELLENT**

Symmetry

**EXCELLENT**

Fluorescence

**NONE**

Inscription(s)

**LABGROWN IGI LG517202141**

Comments: As Grown - No indication of post-growth treatment.  
This Laboratory Grown Diamond was created by High Pressure High Temperature (HPHT) growth process.  
Type II

February 23, 2022

IGI Report Number

**LG517202141**

Description

**LABORATORY GROWN  
DIAMOND**

Shape and Cutting Style

**SQUARE CUSHION BRILLIANT**

Measurements

**6.66 X 6.57 X 4.36 MM**

**GRADING RESULTS**

Carat Weight

**1.50 CARAT**

Color Grade

**D**

Clarity Grade

**VS 2**

**ADDITIONAL GRADING INFORMATION**

Polish

**EXCELLENT**

Symmetry

**EXCELLENT**

Fluorescence

**NONE**

Inscription(s)

**LABGROWN IGI LG517202141**

Comments: As Grown - No indication of post-growth treatment.

This Laboratory Grown Diamond was created by High Pressure High Temperature (HPHT) growth process.  
Type II



**IGI**

|                                        |                                        |                                        |                                                                                                                                                                     |
|----------------------------------------|----------------------------------------|----------------------------------------|---------------------------------------------------------------------------------------------------------------------------------------------------------------------|
| February 23, 2022                      | IGI Report No. LG517202141             | 1.50 CARAT                             | D                                                                                                                                                                   |
| SQUARE CUSHION BRILLIANT               | 6.66 X 6.57 X 4.36 MM                  | 66.4%                                  | 66.5%                                                                                                                                                               |
| Carat Weight                           | Color Grade                            | Clarity Grade                          | Table                                                                                                                                                               |
| 6.66 X 6.57 X 4.36 MM                  | D                                      | VS 2                                   | 50%                                                                                                                                                                 |
| Color Grade                            | Clarity Grade                          | Table                                  | Grids                                                                                                                                                               |
| D                                      | VS 2                                   | 50%                                    | Slightly Thick To Very Thick (Faceted)                                                                                                                              |
| Clarity Grade                          | Table                                  | Grids                                  | Culet                                                                                                                                                               |
| VS 2                                   | 50%                                    | Slightly Thick To Very Thick (Faceted) | Pointed                                                                                                                                                             |
| Table                                  | Grids                                  | Culet                                  | Polish                                                                                                                                                              |
| 50%                                    | Slightly Thick To Very Thick (Faceted) | Pointed                                | EXCELLENT                                                                                                                                                           |
| Slightly Thick To Very Thick (Faceted) | Culet                                  | Polish                                 | EXCELLENT                                                                                                                                                           |
| Grids                                  | Polish                                 | Symmetry                               | EXCELLENT                                                                                                                                                           |
| Culet                                  | EXCELLENT                              | Symmetry                               | EXCELLENT                                                                                                                                                           |
| Polish                                 | EXCELLENT                              | Fluorescence                           | NONE                                                                                                                                                                |
| Symmetry                               | EXCELLENT                              | Inscription(s)                         | LABGROWN IGI LG517202141                                                                                                                                            |
| Fluorescence                           | NONE                                   | Inscription(s)                         | LABGROWN IGI LG517202141                                                                                                                                            |
| Inscription(s)                         | LABGROWN IGI LG517202141               | Comments:                              | As Grown - No indication of post-growth treatment.<br>This Laboratory Grown Diamond was created by High Pressure High Temperature (HPHT) growth process.<br>Type II |