



**INTERNATIONAL
GEMOLOGICAL
INSTITUTE**

ELECTRONIC COPY LABORATORY GROWN
DIAMOND REPORT

**IGI LABORATORY GROWN
DIAMOND ID REPORT**

March 16, 2022
IGI Report Number **LG519271672**

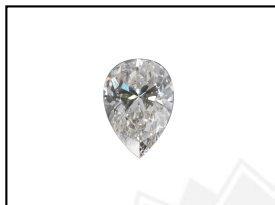
LABORATORY GROWN DIAMOND REPORT

LG519271672

PEAR BRILLIANT
7.05 X 4.65 X 2.78 MM
Carat Weight 0.51 CARAT
Color Grade F
Clarity Grade VS 1
Polish VERY GOOD
Symmetry VERY GOOD
Fluorescence NONE
Inscription(s) LABGROWN IGI
LG519271672

IGI LABORATORY GROWN DIAMOND IDENTIFICATION REPORT

March 16, 2022
IGI Report Number LG519271672
Description LABORATORY GROWN DIAMOND
Shape and Cutting Style PEAR BRILLIANT
Measurements 7.05 X 4.65 X 2.78 MM



Comments: This Laboratory Grown Diamond was created by Chemical Vapor Deposition (CVD) growth process and may include post-growth treatment.
Type IIa

GRADING RESULTS

Carat Weight 0.51 CARAT
Color Grade F
Clarity Grade VS 1

LASERSCRIBESM
Sample Images Used

ADDITIONAL GRADING INFORMATION

Polish VERY GOOD
Symmetry VERY GOOD
Fluorescence NONE
Inscription(s) LABGROWN IGI LG519271672



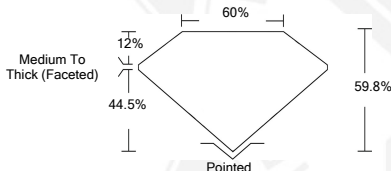
**IGI LABORATORY GROWN
DIAMOND ID REPORT**

March 16, 2022
IGI Report Number **LG519271672**

Comments: This Laboratory Grown Diamond was created by Chemical Vapor Deposition (CVD) growth process and may include post-growth treatment.
Type IIa

PEAR BRILLIANT
7.05 X 4.65 X 2.78 MM
Carat Weight 0.51 CARAT
Color Grade F
Clarity Grade VS 1
Polish VERY GOOD
Symmetry VERY GOOD
Fluorescence NONE
Inscription(s) LABGROWN IGI
LG519271672

Comments: This Laboratory Grown Diamond was created by Chemical Vapor Deposition (CVD) growth process and may include post-growth treatment.
Type IIa



THIS DOCUMENT WAS PRODUCED WITH THE FOLLOWING SECURITY MEASURES: SPECIAL DOCUMENT PAPER, INK SCREENS, WATERMARK, BACKGROUND DESIGN, HOLOGRAM AND OTHER SECURITY FEATURES NOT LISTED AND DO EXCEEDED DOCUMENT SECURITY INDUSTRY GUIDELINES.

For Terms & Conditions and to verify this report, please visit www.igi.org