



ELECTRONIC COPY

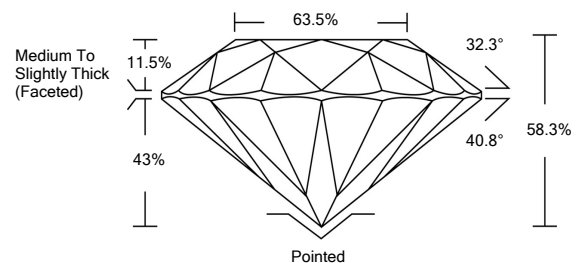
LG523204758

LABORATORY GROWN DIAMOND REPORT

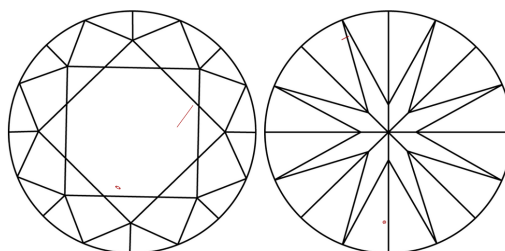
April 23, 2022	
IGI Report Number	LG523204758
Description	LABORATORY GROWN DIAMOND
Shape and Cutting Style	ROUND BRILLIANT
Measurements	8.91 - 8.94 X 5.20 MM
GRADING RESULTS	
Carat Weight	2.53 CARATS
Color Grade	F
Clarity Grade	VS 2
Cut Grade	VERY GOOD
ADDITIONAL GRADING INFORMATION	
Polish	VERY GOOD
Symmetry	VERY GOOD
Fluorescence	NONE
Inscription(s)	LABGROWN IGI LG523204758

Comments: As Grown - No indication of post-growth treatment.
This Laboratory Grown Diamond was created by High Pressure High Temperature (HPHT) growth process.
Type II

PROPORTIONS



CLARITY CHARACTERISTICS

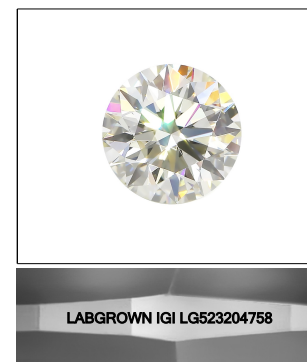


KEY TO SYMBOLS

Red symbols indicate internal characteristics.
Green symbols indicate external characteristics.

GRADING SCALES

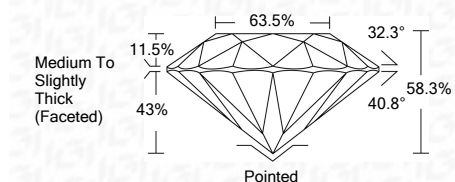
COLOR GRADING SCALE	CL	NC	FT	VL	LT	
	COLORLESS D-F	NEAR COLORLESS G-J	FAINT K-M	VERY LIGHT N-R	LIGHT S-Z	
CLARITY (10x) GRADING SCALE	FL	IF	VVS	VS	SI	I
	FLAWLESS INTERNALLY FLAWLESS	VERY VERY SLIGHTLY INCLUDED	VERY SLIGHTLY INCLUDED	SLIGHTLY INCLUDED	INCLUDED	



LASERSCRIBESM

Sample Image Used

April 23, 2022	
IGI Report Number	LG523204758
Description	LABORATORY GROWN DIAMOND
Shape and Cutting Style	ROUND BRILLIANT
Measurements	8.91 - 8.94 X 5.20 MM
GRADING RESULTS	
Carat Weight	2.53 CARATS
Color Grade	F
Clarity Grade	VS 2
Cut Grade	VERY GOOD



ADDITIONAL GRADING INFORMATION	
Polish	VERY GOOD
Symmetry	VERY GOOD
Fluorescence	NONE
Inscription(s)	LABGROWN IGI LG523204758

Comments: As Grown - No indication of post-growth treatment.
This Laboratory Grown Diamond was created by High Pressure High Temperature (HPHT) growth process.
Type II



April 23, 2022	
IGI Report No. LG523204758	
ROUND BRILLIANT	
8.91 - 8.94 X 5.20 MM	
Carat Weight	2.53 CARATS
Color Grade	F
Clarity Grade	VS 2
Cut Grade	VERY GOOD
Depth	58.3%
Table	63.5%
Girdle	Medium To Slightly Thick (Faceted)
Culet	Pointed
Polish	VERY GOOD
Symmetry	VERY GOOD
Fluorescence	NONE
Inscription(s)	LABGROWN IGI LG523204758
Comments: As Grown - No indication of post-growth treatment. This Laboratory Grown Diamond was created by High Pressure High Temperature (HPHT) growth process. Type II	