



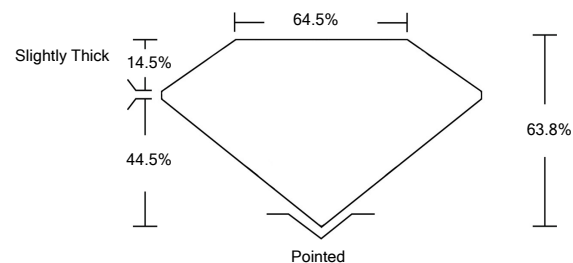
**ELECTRONIC COPY**

LG524209177

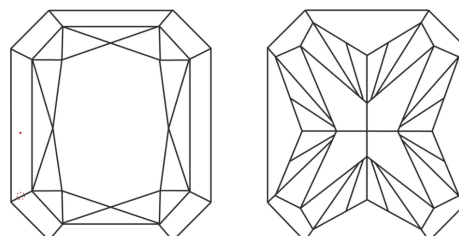
**GRADING SCALES**

|                             |                              |                             |                        |                   |           |   |
|-----------------------------|------------------------------|-----------------------------|------------------------|-------------------|-----------|---|
| COLOR GRADING SCALE         | CL                           | NC                          | FT                     | VL                | LT        |   |
|                             | COLORLESS D-F                | NEAR COLORLESS G-J          | FAINT K-M              | VERY LIGHT N-R    | LIGHT S-Z |   |
| CLARITY (10x) GRADING SCALE | FL                           | IF                          | VVS                    | VS                | SI        | I |
|                             | FLAWLESS INTERNALLY FLAWLESS | VERY VERY SLIGHTLY INCLUDED | VERY SLIGHTLY INCLUDED | SLIGHTLY INCLUDED | INCLUDED  |   |

**PROPORTIONS**

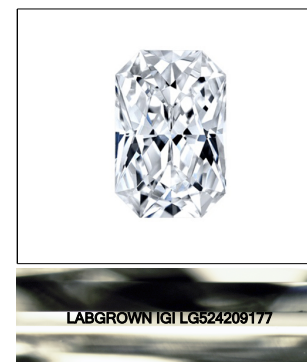


**CLARITY CHARACTERISTICS**



**KEY TO SYMBOLS**

Red symbols indicate internal characteristics.  
Green symbols indicate external characteristics.



LASERSCRIBE<sup>SM</sup>

Sample Image Used

April 12, 2022

IGI Report Number

**LG524209177**

Description

**LABORATORY GROWN  
DIAMOND**

Shape and Cutting Style

**CUT CORNERED  
RECTANGULAR MODIFIED  
BRILLIANT**

Measurements

**6.84 X 5.20 X 3.32 MM**

**GRADING RESULTS**

Carat Weight

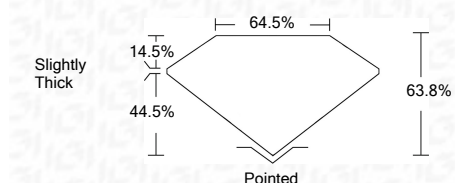
**1.03 CARAT**

Color Grade

**D**

Clarity Grade

**VVS 2**



**ADDITIONAL GRADING INFORMATION**

Polish

**EXCELLENT**

Symmetry

**EXCELLENT**

Fluorescence

**NONE**

Inscription(s)

**LABGROWN IGI LG524209177**

Comments: As Grown - No indication of post-growth treatment.  
This Laboratory Grown Diamond was created by High Pressure High Temperature (HPHT) growth process.  
Type II



**IGI**

|                |                            |                                       |                       |             |               |       |       |        |                |         |           |           |              |                          |   |
|----------------|----------------------------|---------------------------------------|-----------------------|-------------|---------------|-------|-------|--------|----------------|---------|-----------|-----------|--------------|--------------------------|---|
| April 12, 2022 | IGI Report No. LG524209177 | CUT CORNERED RECT. MODIFIED BRILLIANT | 6.84 X 5.20 X 3.32 MM | 1.03 CARAT  | D             | VVS 2 | 63.8% | 64.5%  | Slightly Thick | Pointed | EXCELLENT | EXCELLENT | NONE         | LABGROWN IGI LG524209177 | As Grown - No indication of post-growth treatment. This Laboratory Grown Diamond was created by High Pressure High Temperature (HPHT) growth process. Type II |
|                |                            |                                       |                       | Color Grade | Clarity Grade | Depth | Table | Girdle |                | Culet   | Polish    | Symmetry  | Fluorescence | Inscription(s)           | Comments:   |

