



**ELECTRONIC COPY**

LG526274808

**LABORATORY GROWN DIAMOND REPORT**

April 25, 2022  
 IGI Report Number **LG526274808**  
 Description **LABORATORY GROWN  
DIAMOND**  
 Shape and Cutting Style **ROUND BRILLIANT**  
 Measurements **7.44 - 7.50 X 4.51 MM**

**GRADING RESULTS**

Carat Weight **1.52 CARAT**  
 Color Grade **F**  
 Clarity Grade **VS 2**  
 Cut Grade **IDEAL**

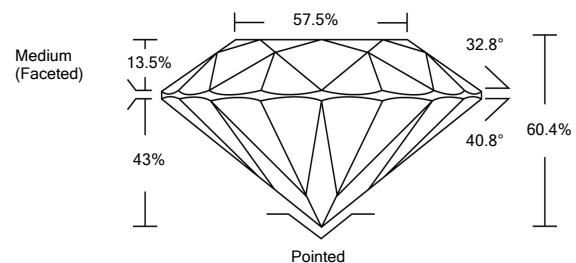
**ADDITIONAL GRADING INFORMATION**

Polish **EXCELLENT**  
 Symmetry **EXCELLENT**  
 Fluorescence **NONE**

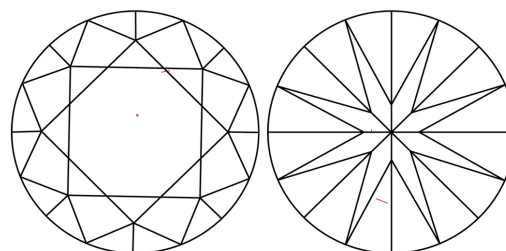
Inscription(s) **LABGROWN IGI LG526274808**

Comments: This Laboratory Grown Diamond was created by Chemical Vapor Deposition (CVD) growth process and may include post-growth treatment.  
 Type IIa

**PROPORTIONS**



**CLARITY CHARACTERISTICS**

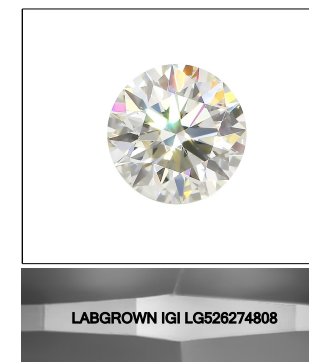


**KEY TO SYMBOLS**

Red symbols indicate internal characteristics.  
 Green symbols indicate external characteristics.

**GRADING SCALES**

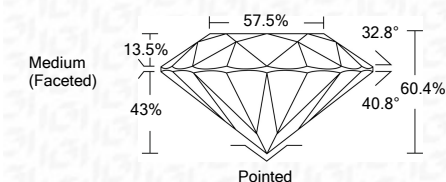
| COLOR GRADING SCALE         | CL                           | NC                          | FT                     | VL                | LT        |          |
|-----------------------------|------------------------------|-----------------------------|------------------------|-------------------|-----------|----------|
|                             | COLORLESS D-F                | NEAR COLORLESS G-J          | FAINT K-M              | VERY LIGHT N-R    | LIGHT S-Z |          |
| CLARITY (10x) GRADING SCALE | FL                           | IF                          | VVS                    | VS                | SI        | I        |
|                             | FLAWLESS INTERNALLY FLAWLESS | VERY VERY SLIGHTLY INCLUDED | VERY SLIGHTLY INCLUDED | SLIGHTLY INCLUDED |           | INCLUDED |



**LASERSCRIBE<sup>SM</sup>**

Sample Image Used

April 25, 2022  
 IGI Report Number **LG526274808**  
 Description **LABORATORY GROWN  
DIAMOND**  
 Shape and Cutting Style **ROUND BRILLIANT**  
 Measurements **7.44 - 7.50 X 4.51 MM**  
**GRADING RESULTS**  
 Carat Weight **1.52 CARAT**  
 Color Grade **F**  
 Clarity Grade **VS 2**  
 Cut Grade **IDEAL**



**ADDITIONAL GRADING INFORMATION**

Polish **EXCELLENT**  
 Symmetry **EXCELLENT**  
 Fluorescence **NONE**

Inscription(s) **LABGROWN IGI LG526274808**

Comments: This Laboratory Grown Diamond was created by Chemical Vapor Deposition (CVD) growth process and may include post-growth treatment.  
 Type IIa



**IGI**



|                 |                            |                  |       |                          |
|-----------------|----------------------------|------------------|-------|--------------------------|
| April 25, 2022  | IGI Report No. LG526274808 | 1.52 CARAT       | F     | Pointed                  |
| ROUND BRILLIANT | 7.44 - 7.50 X 4.51 MM      | VS 2             | IDEAL | EXCELLENT                |
| Carat Weight    | 7.44 - 7.50 X 4.51 MM      | 60.4%            | 57.5% | EXCELLENT                |
| Color Grade     | 1.52 CARAT                 | Medium (Faceted) |       | NONE                     |
| Clarity Grade   | VS 2                       |                  |       | LABGROWN IGI LG526274808 |
| Cut Grade       | IDEAL                      |                  |       | None                     |
| Depth           | 60.4%                      |                  |       |                          |
| Table           | 57.5%                      |                  |       |                          |
| Girdle          | Medium (Faceted)           |                  |       |                          |
| Culet           | Pointed                    |                  |       |                          |
| Polish          | EXCELLENT                  |                  |       |                          |
| Symmetry        | EXCELLENT                  |                  |       |                          |
| Fluorescence    | NONE                       |                  |       |                          |
| Inscription(s)  | LABGROWN IGI LG526274808   |                  |       |                          |

Comments: This Laboratory Grown Diamond was created by Chemical Vapor Deposition (CVD) growth process and may include post-growth treatment.  
 Type IIa