



539239497

**DIAMOND REPORT** **ELECTRONIC COPY**

August 17, 2022  
 IGI Report Number 539239497  
 Description NATURAL DIAMOND  
 Shape and Cutting Style ROUND BRILLIANT  
 Measurements 7.37 - 7.42 x 4.53 mm

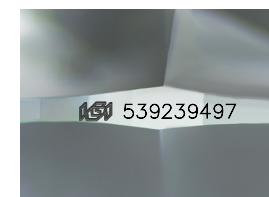
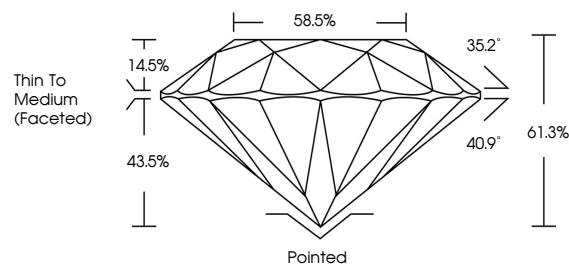
**GRADING RESULTS**

Carat Weight 1.51 CARAT  
 Color Grade K  
 Clarity Grade VS 2  
 Cut Grade EXCELLENT

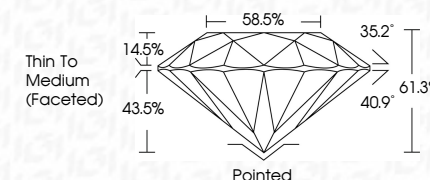
**ADDITIONAL GRADING INFORMATION**

Polish EXCELLENT  
 Symmetry EXCELLENT  
 Fluorescence NONE  
 Inscription(s) IGI 539239497  
 Comments: IDEAL CUT ROUND BRILLIANT

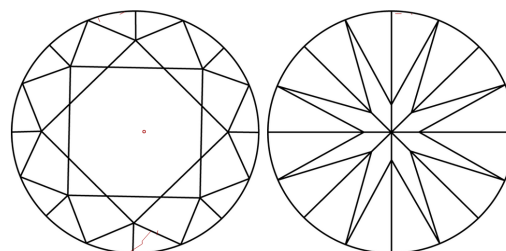
**PROPORTIONS**



Sample Image Used



**CLARITY CHARACTERISTICS**



**KEY TO SYMBOLS**

Red symbols indicate internal characteristics.  
 Green symbols indicate external characteristics.

**COLOR**

D - F	G - J	K - M	N - R	S - Z	FANCY
Colorless	Near Colorless	Slightly Tinted	Very Light Color	Light Color	

**CLARITY**

IF	VS <sup>1-2</sup>	VS <sup>1-2</sup>	SI <sup>1-2</sup>	I <sup>1-3</sup>
Internally Flawless	Very Very Slightly Included	Very Slightly Included	Slightly Included	Included

**GRADING RESULTS**

Carat Weight 1.51 CARAT  
 Color Grade K  
 Clarity Grade VS 2  
 Cut Grade EXCELLENT

**ADDITIONAL GRADING INFORMATION**

Polish EXCELLENT  
 Symmetry EXCELLENT  
 Fluorescence NONE  
 Inscription(s) IGI 539239497  
 Comments: IDEAL CUT ROUND BRILLIANT



**IGI**



August 17, 2022  
 IGI Report No 539239497  
 NATURAL DIAMOND  
 ROUND BRILLIANT  
 7.37 - 7.42 x 4.53 mm  
 Carat Weight 1.51 CARAT  
 Color Grade K  
 Clarity Grade VS 2  
 Cut Grade EXCELLENT  
 Depth 61.3%  
 Table 58.5%  
 Grade Thin To Medium (Faceted)  
 Curf Pointed  
 Polish EXCELLENT  
 Symmetry EXCELLENT  
 Fluorescence NONE  
 Inscription(s) IGI 539239497  
 Comments: IDEAL CUT ROUND BRILLIANT