



ELECTRONIC COPY

LABORATORY GROWN DIAMOND REPORT

LG559294064

January 6, 2023
IGI Report Number **LG559294064**

Description **LABORATORY GROWN
DIAMOND**
Shape and Cutting Style **TRAPEZE MODIFIED BRILLIANT**
Measurements **9.38 X 6.10 X 3.87 MM**

GRADING RESULTS

Carat Weight **1.74 CARAT**
Color Grade **G**
Clarity Grade **VS 1**

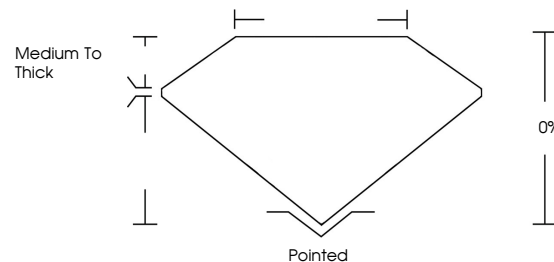
ADDITIONAL GRADING INFORMATION

Polish **EXCELLENT**
Symmetry **EXCELLENT**
Fluorescence **NONE**

Inscription(s) **LABGROWN IGI LG559294064**

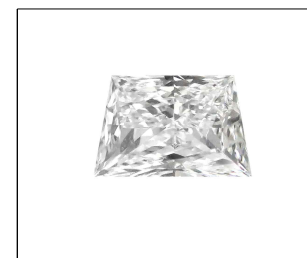
Comments: This Laboratory Grown Diamond was created by Chemical Vapor Deposition (CVD) growth process and may include post-growth treatment. Type IIa

PROPORTIONS



GRADING SCALES

COLOR GRADING SCALE	CL	NC	FT	VLT	LT	
	COLORLESS D-F	NEAR COLORLESS G-J	FAINT K-M	VERY LIGHT N-R	LIGHT S-Z	
CLARITY (10x) GRADING SCALE	FL	IF	VVS	VS	SI	I
	FLAWLESS INTERNALLY FLAWLESS	VERY VERY SLIGHTLY INCLUDED	VERY SLIGHTLY INCLUDED	SLIGHTLY INCLUDED	INCLUDED	INCLUDED



LABGROWN IGI LG559294064

LASERSCRIBESM

Sample Image Used

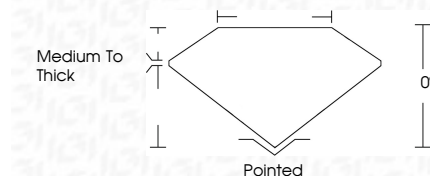


January 6, 2023
IGI Report Number **LG559294064**
Description **LABORATORY GROWN
DIAMOND**

Shape and Cutting Style **TRAPEZE MODIFIED BRILLIANT**
Measurements **9.38 X 6.10 X 3.87 MM**

GRADING RESULTS

Carat Weight **1.74 CARAT**
Color Grade **G**
Clarity Grade **VS 1**



ADDITIONAL GRADING INFORMATION

Polish **EXCELLENT**
Symmetry **EXCELLENT**
Fluorescence **NONE**
Inscription(s) **LABGROWN IGI LG559294064**

Comments: This Laboratory Grown Diamond was created by Chemical Vapor Deposition (CVD) growth process and may include post-growth treatment. Type IIa



IGI

January 6, 2023
IGI Report No. **LG559294064**
TRAPEZE MODIFIED BRILLIANT
Carat Weight **1.74 CARAT**
Color Grade **G**
Clarity Grade **VS 1**
Depth **0%**
Table **0%**
Girdle **Medium To Thick**
Culet **Pointed**
Polish **EXCELLENT**
Symmetry **EXCELLENT**
Fluorescence **NONE**
Inscription(s) **LABGROWN IGI LG559294064**
Comments: This Laboratory Grown Diamond was created by Chemical Vapor Deposition (CVD) growth process and may include post-growth treatment. Type IIa