



ELECTRONIC COPY

LABORATORY GROWN DIAMOND REPORT

LG560208635

January 16, 2023
IGI Report Number LG560208635
Description LABORATORY GROWN DIAMOND
Shape and Cutting Style CUT CORNERED RECTANGULAR MODIFIED BRILLIANT
Measurements 10.44 X 7.31 X 4.99 MM

GRADING RESULTS

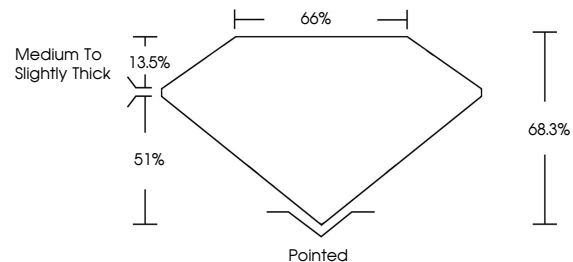
Carat Weight 3.23 CARATS
Color Grade H
Clarity Grade VS 1

ADDITIONAL GRADING INFORMATION

Polish EXCELLENT
Symmetry EXCELLENT
Fluorescence NONE
Inscription(s) LABGROWN LG560208635

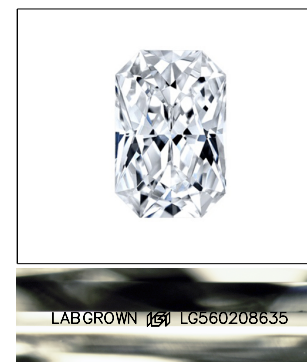
Comments: This Laboratory Grown Diamond was created by Chemical Vapor Deposition (CVD) growth process and may include post-growth treatment. Type IIa

PROPORTIONS



GRADING SCALES

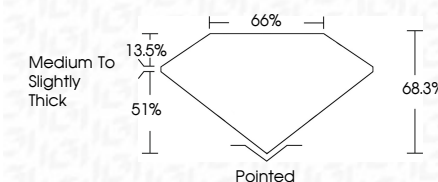
Table with 2 rows and 5 columns showing color and clarity grading scales. Color scale: CL (Colorless D-F), NC (Near colorless G-J), FT (Faint K-M), VLT (Very light N-R), LT (Light S-Z). Clarity scale: FL (Flawless internally flawless), IF (Internally flawless), VVS (Very very slightly included), VS (Very slightly included), SI (Slightly included), I (Included).



LASERSCRIBE SM
Sample Image Used



January 16, 2023
IGI Report Number LG560208635
Description LABORATORY GROWN DIAMOND
Shape and Cutting Style CUT CORNERED RECTANGULAR MODIFIED BRILLIANT
Measurements 10.44 X 7.31 X 4.99 MM
GRADING RESULTS
Carat Weight 3.23 CARATS
Color Grade H
Clarity Grade VS 1



ADDITIONAL GRADING INFORMATION

Polish EXCELLENT
Symmetry EXCELLENT
Fluorescence NONE
Inscription(s) LABGROWN LG560208635

Comments: This Laboratory Grown Diamond was created by Chemical Vapor Deposition (CVD) growth process and may include post-growth treatment. Type IIa



IGI

January 16, 2023
IGI Report No. LG560208635
CUT CORNERED RECT. MODIFIED
10.44 X 7.31 X 4.99 MM
Carat Weight 3.23 CARATS
Color Grade H
Clarity Grade VS 1
Depth 68.3%
Table 66%
Girdle Medium To Slightly Thick
Culet Pointed
Polish EXCELLENT
Symmetry EXCELLENT
Fluorescence NONE
Inscription(s) LABGROWN LG560208635
Comments: This Laboratory Grown Diamond was created by Chemical Vapor Deposition (CVD) growth process and may include post-growth treatment. Type IIa