



**INTERNATIONAL
GEMOLOGICAL
INSTITUTE**

ELECTRONIC COPY

LABORATORY GROWN DIAMOND REPORT

March 14, 2023
 IGI Report Number **LG571319030**
 Description **LABORATORY GROWN
DIAMOND**
 Shape and Cutting Style **PEAR BRILLIANT**
 Measurements **9.09 X 5.70 X 3.56 MM**

GRADING RESULTS

Carat Weight **1.08 CARAT**
 Color Grade **H**
 Clarity Grade **VVS 2**
 Cut Grade **VERY GOOD**

ADDITIONAL GRADING INFORMATION

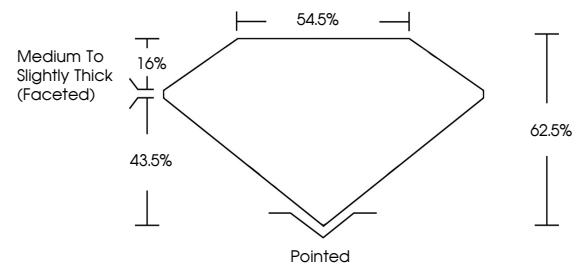
Polish **EXCELLENT**
 Symmetry **VERY GOOD**
 Fluorescence **NONE**
 Inscription(s) **GROWN IN THE USA Pat.6,858,078
IGI LG571319030**

Comments: As Grown - No indication of post-growth treatment.
 This Laboratory Grown Diamond was created by Chemical Vapor Deposition (CVD) growth process.

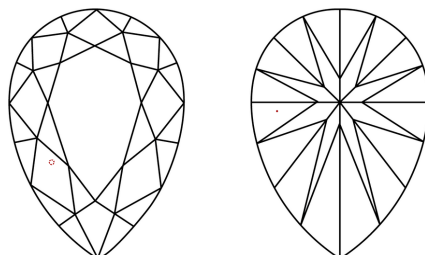
LABORATORY GROWN DIAMOND REPORT

LG571319030
 Report verification at igi.org

PROPORTIONS



CLARITY CHARACTERISTICS



KEY TO SYMBOLS

Red symbols indicate internal characteristics.
 Green symbols indicate external characteristics.

**LABORATORY GROWN
DIAMOND REPORT**

GRADING SCALES

CLARITY

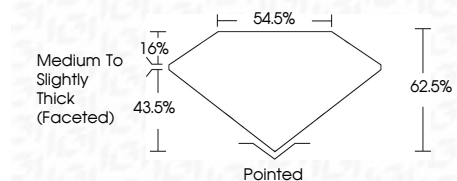
IF	VVS ¹⁻²	VS ¹⁻²	SI ¹⁻²	I ¹⁻³
Internally Flawless	Very Very Slightly Included	Very Slightly Included	Slightly Included	Included

COLOR

D	E	F	G	H	I	J	Faint	Very Light	Light
---	---	---	---	---	---	---	-------	------------	-------

LABORATORY GROWN DIAMOND REPORT

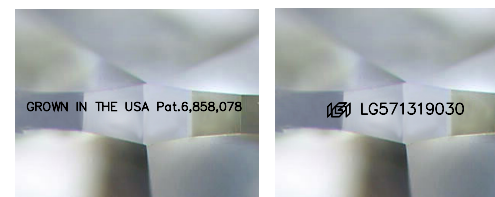
March 14, 2023
 IGI Report Number **LG571319030**
 Description **LABORATORY GROWN
DIAMOND**
 Shape and Cutting Style **PEAR BRILLIANT**
 Measurements **9.09 X 5.70 X 3.56 MM**
GRADING RESULTS
 Carat Weight **1.08 CARAT**
 Color Grade **H**
 Clarity Grade **VVS 2**
 Cut Grade **VERY GOOD**



ADDITIONAL GRADING INFORMATION

Polish **EXCELLENT**
 Symmetry **VERY GOOD**
 Fluorescence **NONE**
 Inscription(s) **GROWN IN THE USA Pat.6,858,078
IGI LG571319030**

Comments: As Grown - No indication of post-growth treatment.
 This Laboratory Grown Diamond was created by Chemical Vapor Deposition (CVD) growth process.



Sample Images Used



March 14, 2023
 IGI Report No **LG571319030**
PEAR BRILLIANT
 9.09 X 5.70 X 3.56 MM
 Carat Weight **1.08 CARAT**
 Color Grade **H**
 Clarity Grade **VVS 2**
 Cut Grade **VERY GOOD**
 Depth **43.5%**
 Table **54.5%**
 Girdle **Medium To Slightly Thick (Faceted)**
 Culet **Pointed**
 Polish **EXCELLENT**
 Symmetry **VERY GOOD**
 Fluorescence **NONE**
 Inscription(s) **GROWN IN THE USA Pat.6,858,078 IGI LG571319030**
 Comments: As Grown - No indication of post-growth treatment.
 This Laboratory Grown Diamond was created by Chemical Vapor Deposition (CVD) growth process.

