



**INTERNATIONAL
GEMOLOGICAL
INSTITUTE**

DIAMOND REPORT

ELECTRONIC COPY

August 17, 2023
IGI Report Number 575387454
Description NATURAL DIAMOND
Shape and Cutting Style ROUND BRILLIANT
Measurements 5.09 - 5.12 x 3.13 mm

GRADING RESULTS

Carat Weight 0.50 CARAT
Color Grade J
Clarity Grade VS 2
Cut Grade EXCELLENT

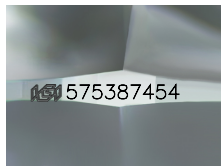
ADDITIONAL GRADING INFORMATION

Polish EXCELLENT
Symmetry EXCELLENT
Fluorescence SLIGHT

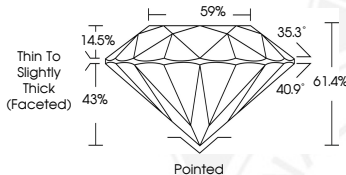
Identification Features CRYSTAL
Inscription(s) IGI 575387454
Comments: IDEAL CUT ROUND BRILLIANT



575387454



Sample Image Used



COLOR

D - F	G - J	K - M	N - R	S - Z	FANCY
Colorless	Near Colorless	Slightly Tinted	Very Light Color	Light Color	

CLARITY

IF	VS ¹⁻²	VS ¹⁻²	SI ¹⁻²	I ¹⁻²
Internally Flawless	Very Very Slightly Included	Very Slightly Included	Slightly Included	Included

© IGI 2020, International Gemological Institute FD - 10 20



THIS DOCUMENT WAS PRODUCED WITH THE FOLLOWING SECURITY MEASURES: SPECIAL DOCUMENT PAPER, INK SCREENS, WATERMARK, BACKGROUND DESIGN, HOLOGRAM AND OTHER SECURITY FEATURES NOT LISTED AND DO EXCEED DOCUMENT SECURITY INDUSTRY GUIDELINES.



August 17, 2023
IGI Report Number 575387454
NATURAL DIAMOND
ROUND BRILLIANT
5.09 - 5.12 x 3.13 mm
Carat Weight 0.50 CARAT
Color Grade J
Clarity Grade VS 2
Cut Grade EXCELLENT
Polish EXCELLENT
Symmetry EXCELLENT
Fluorescence SLIGHT
Inscription(s) IGI 575387454
Comments: IDEAL CUT ROUND BRILLIANT



August 17, 2023
IGI Report Number 575387454
NATURAL DIAMOND
ROUND BRILLIANT
5.09 - 5.12 x 3.13 mm
Carat Weight 0.50 CARAT
Color Grade J
Clarity Grade VS 2
Cut Grade EXCELLENT
Polish EXCELLENT
Symmetry EXCELLENT
Fluorescence SLIGHT
Inscription(s) IGI 575387454
Comments: IDEAL CUT ROUND BRILLIANT