



**INTERNATIONAL  
GEMOLOGICAL  
INSTITUTE**

**ELECTRONIC COPY**

**LABORATORY GROWN  
DIAMOND REPORT**

**LG585323744**

**IGI LABORATORY GROWN  
DIAMOND ID REPORT**

July 6, 2023  
IGI Report Number **LG585323744**  
**ROUND BRILLIANT**  
**4.30 - 4.32 X 2.64 MM**  
Carat Weight 0.30 CARAT  
Color Grade D  
Clarity Grade SI 1  
Cut Grade IDEAL  
Polish EXCELLENT  
Symmetry EXCELLENT  
Fluorescence NONE  
Inscription(s) LG585323744

Comments: This Laboratory Grown Diamond was created by Chemical Vapor Deposition (CVD) growth process and may include post-growth treatment. Type Ila

**LABORATORY GROWN DIAMOND REPORT**

**IGI LABORATORY GROWN DIAMOND IDENTIFICATION REPORT**

July 6, 2023  
IGI Report Number LG585323744  
Description LABORATORY GROWN DIAMOND  
Shape and Cutting Style ROUND BRILLIANT  
Measurements 4.30 - 4.32 X 2.64 MM

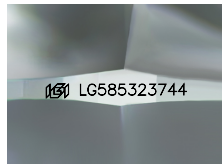
**GRADING RESULTS**

Carat Weight 0.30 CARAT  
Color Grade D  
Clarity Grade SI 1  
Cut Grade IDEAL

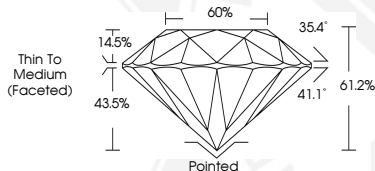
**ADDITIONAL GRADING INFORMATION**

Polish EXCELLENT  
Symmetry EXCELLENT  
Fluorescence NONE  
Inscription(s) LG585323744

Comments: This Laboratory Grown Diamond was created by Chemical Vapor Deposition (CVD) growth process and may include post-growth treatment. Type Ila



Sample Image Used



**IGI LABORATORY GROWN  
DIAMOND ID REPORT**

July 6, 2023  
IGI Report Number **LG585323744**  
**ROUND BRILLIANT**  
**4.30 - 4.32 X 2.64 MM**  
Carat Weight 0.30 CARAT  
Color Grade D  
Clarity Grade SI 1  
Cut Grade IDEAL  
Polish EXCELLENT  
Symmetry EXCELLENT  
Fluorescence NONE  
Inscription(s) LG585323744

Comments: This Laboratory Grown Diamond was created by Chemical Vapor Deposition (CVD) growth process and may include post-growth treatment. Type Ila

THIS DOCUMENT WAS PRODUCED WITH THE FOLLOWING SECURITY MEASURES: SPECIAL DOCUMENT PAPER, INK SCREENS, WATERMARK, BACKGROUND DESIGN, HOLOGRAM AND OTHER SECURITY FEATURES NOT LISTED AND DO EXCEED DOCUMENT SECURITY INDUSTRY GUIDELINES.

For terms & conditions and to verify this report, please visit [www.igi.org](http://www.igi.org)