



**INTERNATIONAL
GEMOLOGICAL
INSTITUTE**

589395284

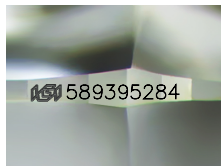


August 16, 2023
IGI Report Number 589395284
NATURAL DIAMOND
ROUND BRILLIANT
5.10 - 5.18 x 3.19 mm
Carat Weight 0.52 CARAT
Color Grade K
Clarity Grade VS 1
Cut Grade EXCELLENT
Polish EXCELLENT
Symmetry EXCELLENT
Fluorescence STRONG
Inscription(s) IGI 589395284
Comments: IDEAL CUT ROUND BRILLIANT

DIAMOND REPORT

ELECTRONIC COPY

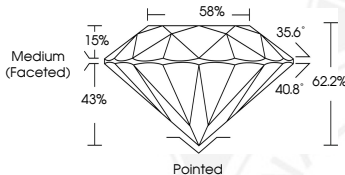
August 16, 2023
IGI Report Number 589395284
Description NATURAL DIAMOND
Shape and Cutting Style ROUND BRILLIANT
Measurements 5.10 - 5.18 x 3.19 mm



Sample Image Used

GRADING RESULTS

Carat Weight 0.52 CARAT
Color Grade K
Clarity Grade VS 1
Cut Grade EXCELLENT



ADDITIONAL GRADING INFORMATION

Polish EXCELLENT
Symmetry EXCELLENT
Fluorescence STRONG

Identification Features CRYSTAL
Inscription(s) IGI 589395284
Comments: IDEAL CUT ROUND BRILLIANT



August 16, 2023
IGI Report Number 589395284
NATURAL DIAMOND
ROUND BRILLIANT
5.10 - 5.18 x 3.19 mm
Carat Weight 0.52 CARAT
Color Grade K
Clarity Grade VS 1
Cut Grade EXCELLENT
Polish EXCELLENT
Symmetry EXCELLENT
Fluorescence STRONG
Inscription(s) IGI 589395284
Comments: IDEAL CUT ROUND BRILLIANT

COLOR

D - F	G - J	K - M	N - R	S - Z	FANCY
Colorless	Near Colorless	Slightly Tinted	Very Light Color	Light Color	

CLARITY

IF	VS ¹⁻²	VS ¹⁻²	SI ¹⁻²	I ¹⁻²
Internally Flawless	Very Very Slightly Included	Very Slightly Included	Slightly Included	Included



© IGI 2020, International Gemological Institute FD - 10 20



THIS DOCUMENT WAS PRODUCED WITH THE FOLLOWING SECURITY MEASURES: SPECIAL DOCUMENT PAPER, INK SCREENS, WATERMARK, BACKGROUND DESIGN, HOLOGRAM AND OTHER SECURITY FEATURES NOT LISTED AND DO EXCEED DOCUMENT SECURITY INDUSTRY GUIDELINES.