



ELECTRONIC COPY

LG414095610

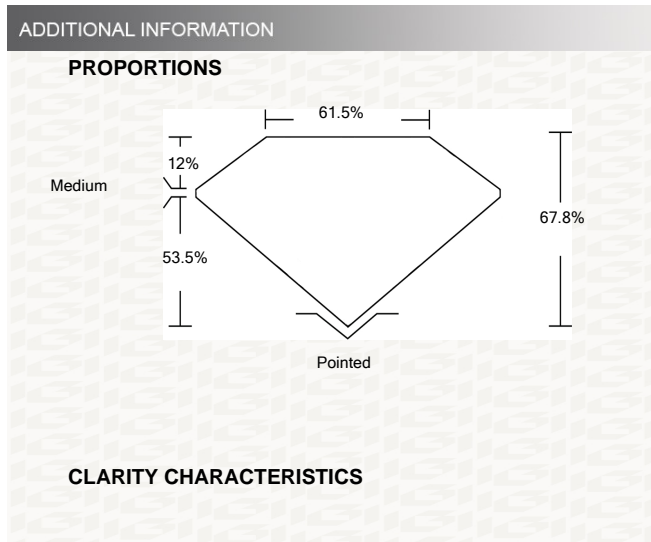
IGI GEMOLOGICAL REPORT IGI LABORATORY GROWN DIAMOND GRADING REPORT

05/23/2020 IGI Report Number LG414095610 Shape and Cutting Style CUT CORNERED RECTANGULAR MODIFIED BRILLIANT Measurements 6.49 X 5.41 X 3.67 MM

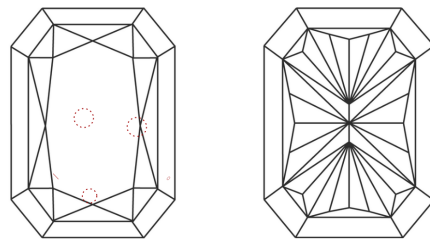
GRADING RESULTS Carat Weight 1.03 CARAT Color Grade E Clarity Grade VS 2

ADDITIONAL GRADING INFORMATION Polish EXCELLENT Symmetry VERY GOOD Fluorescence NONE Inscription(s) LABGROWN IGI LG414095610

Comments: This Laboratory grown diamond was created by high pressure high temperature process (HPHT) Type II



CLARITY CHARACTERISTICS



KEY TO SYMBOLS

Red symbols indicate internal characteristics. Green symbols indicate external characteristics.

This Report is subject to the terms and conditions

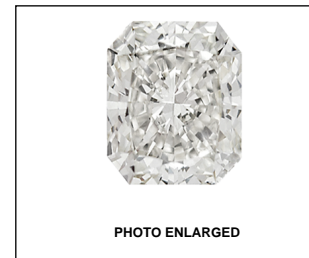
© IGI 2000, edition 2019 all rights reserved.

GRADING SCALES

Table showing color grading scales (CL, NC, FT, VLT, LT) and clarity grading scales (FL, IF, VVS, VS, SI, I).

The laboratory grown diamond described in this Report ("Report") has been graded, tested, analyzed, examined and/or inscribed by International Gemological Institute (IGI). A laboratory grown diamond is one that has essentially the same chemical, physical and optical properties as a mined diamond, with the exception of being grown by man (a manufactured product). IGI employs and utilizes those techniques and equipment currently available to IGI, including, without limitation, 10X magnification, corrected triplet loupe, binocular microscope, master color comparison stones, non-contact-optical measuring device, Diamond Sure™, Diamond View™, Spectrophotometer and such other instruments and/or processes as deemed appropriate by IGI. This Report includes advanced security features. A duly accredited gemologist or jeweler can advise you with respect to the importance of and interrelationship between cut, color, clarity and carat weight. THIS REPORT IS NEITHER A GUARANTEE, VALUATION, NOR APPRAISAL OF THE GEMSTONE DESCRIBED HEREIN. PLEASE REVIEW THE LIMITATIONS AND RESTRICTIONS SET FORTH ONLINE. FOR ADDITIONAL INFORMATION, IMPORTANT LIMITATIONS AND DISCLAIMERS, PLEASE GO TO WWW.IGI.ORG OR CALL 1-888-BUY-IGIS.

© INTERNATIONAL GEMOLOGICAL INSTITUTE, INC.



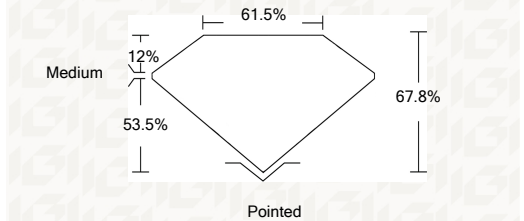
LABGROWN IGI LG414095610

LASERSCRIBE SM



IGI LABORATORY GROWN DIAMOND GRADING REPORT 05/23/2020

IGI Report Number LG414095610 Shape and Cutting Style CUT CORNERED RECTANGULAR MODIFIED BRILLIANT Measurements 6.49 X 5.41 X 3.67 MM GRADING RESULTS Carat Weight 1.03 CARAT Color Grade E Clarity Grade VS 2



ADDITIONAL GRADING INFORMATION Polish EXCELLENT Symmetry VERY GOOD Fluorescence NONE Inscription(s) LABGROWN IGI LG414095610

Comments: This Laboratory grown diamond was created by high pressure high temperature process (HPHT) Type II



IGI

05/23/2020 IGI Report No LG414095610 CUT CORNERED RECTANGULAR MODIFIED BRILLIANT 6.49 X 5.41 X 3.67 MM Carat Weight 1.03 CARAT Color Grade E Clarity Grade VS 2 Depth 67.8% Table 61.5% Girdle Medium Culet Pointed Polish EXCELLENT Symmetry VERY GOOD Fluorescence NONE Inscription(s) LABGROWN IGI LG414095610 Comments: This Laboratory grown diamond was created by high pressure high temperature process (HPHT) Type II