



LABORATORY GROWN DIAMOND REPORT

LG467128907

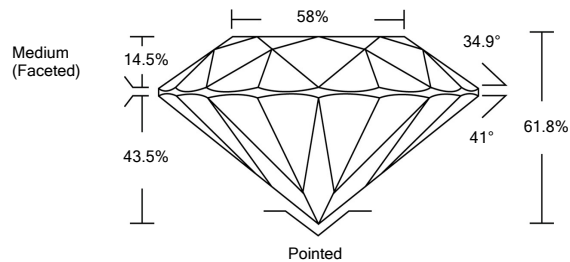
GRADING SCALES

Table with 5 columns for Color Grading Scale (CL, NC, FT, VLT, LT) and Clarity (10x) Grading Scale (FL, IF, VVS, VS, SI, I).

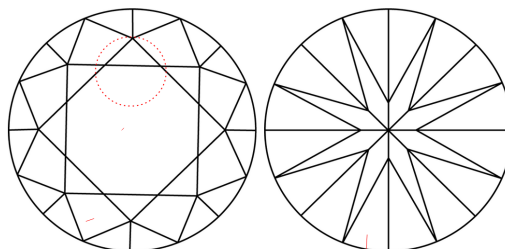
The laboratory grown diamond described in this Report (Report) has been graded, tested, analyzed, examined and/or inscribed by International Gemological Institute (IGI). A laboratory grown diamond is one that has essentially the same chemical, physical and optical properties as a mined diamond...

© INTERNATIONAL GEMOLOGICAL INSTITUTE, INC.

PROPORTIONS

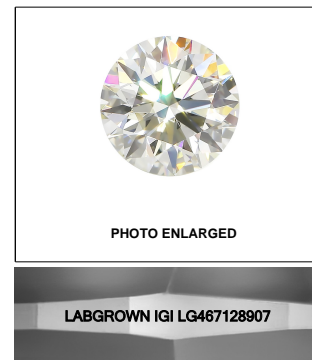


CLARITY CHARACTERISTICS



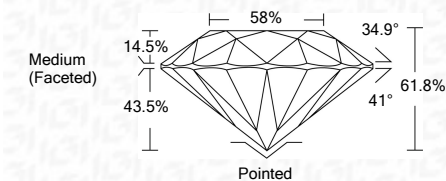
KEY TO SYMBOLS

Red symbols indicate internal characteristics. Green symbols indicate external characteristics.



LASERSCRIBESM

03/17/2021 IGI Report Number LG467128907 Shape and Cutting Style ROUND BRILLIANT Measurements 7.45 - 7.49 x 4.61 mm GRADING RESULTS Carat Weight 1.58 CARAT Color Grade F Clarity Grade I1 Cut Grade IDEAL



ADDITIONAL GRADING INFORMATION Polish EXCELLENT Symmetry EXCELLENT Fluorescence NONE Inscription(s) LABGROWN IGI LG467128907

Comments: This Laboratory Grown Diamond was created by Chemical Vapor Deposition (CVD) growth process and may include post-growth treatment. Type IIa

03/17/2021 IGI Report Number LG467128907 Shape and Cutting Style ROUND BRILLIANT Measurements 7.45 - 7.49 x 4.61 mm GRADING RESULTS Carat Weight 1.58 CARAT Color Grade F Clarity Grade I1 Cut Grade IDEAL ADDITIONAL GRADING INFORMATION Polish EXCELLENT Symmetry EXCELLENT Fluorescence NONE Inscription(s) LABGROWN IGI LG467128907

Comments: This Laboratory Grown Diamond was created by Chemical Vapor Deposition (CVD) growth process and may include post-growth treatment. Type IIa



IGI

03/17/2021 IGI Report No. LG467128907 ROUND BRILLIANT 7.45 - 7.49 x 4.61 mm 1.58 CARAT F I1 IDEAL 61.8% 58% Medium (Faceted) Pointed EXCELLENT EXCELLENT NONE LABGROWN IGI LG467128907 Comments: This Laboratory Grown Diamond was created by Chemical Vapor Deposition (CVD) growth process and may include post-growth treatment. Type IIa