



**INTERNATIONAL  
GEMOLOGICAL  
INSTITUTE**

478193845



June 24, 2021  
IGI Report Number 478193845

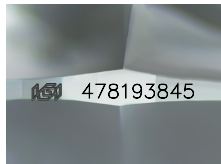
NATURAL DIAMOND  
ROUND BRILLIANT  
4.32 - 4.35 x 2.67 mm

Carat Weight 0.30 CARAT  
Color Grade H  
Clarity Grade SI 2  
Cut Grade EXCELLENT  
Polish EXCELLENT  
Symmetry EXCELLENT  
Fluorescence NONE  
Inscription(s) IGI 478193845  
Comments: IDEAL CUT ROUND  
BRILLIANT

**DIAMOND REPORT**

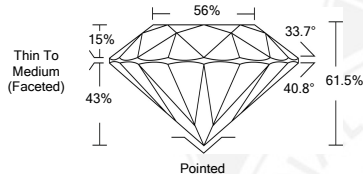
**ELECTRONIC COPY**

June 24, 2021  
IGI Report Number 478193845  
Description NATURAL DIAMOND  
Shape and Cutting Style ROUND BRILLIANT  
Measurements 4.32 - 4.35 x 2.67 mm



**GRADING RESULTS**

Carat Weight 0.30 CARAT  
Color Grade H  
Clarity Grade SI 2  
Cut Grade EXCELLENT



**ADDITIONAL GRADING INFORMATION**

Polish EXCELLENT  
Symmetry EXCELLENT  
Fluorescence NONE

Identification Features CRYSTAL, FEATHER  
Inscription(s) IGI 478193845  
Comments: IDEAL CUT ROUND BRILLIANT



June 24, 2021  
IGI Report Number 478193845

NATURAL DIAMOND  
ROUND BRILLIANT  
4.32 - 4.35 x 2.67 mm

Carat Weight 0.30 CARAT  
Color Grade H  
Clarity Grade SI 2  
Cut Grade EXCELLENT  
Polish EXCELLENT  
Symmetry EXCELLENT  
Fluorescence NONE  
Inscription(s) IGI 478193845  
Comments: IDEAL CUT ROUND  
BRILLIANT

**COLOR**

D - F	G - J	K - M	N - R	S - Z	FANCY
Colorless	Near Colorless	Slightly Tinted	Very Light Color	Light Color	

**CLARITY**

IF	VS <sup>1-2</sup>	VS <sup>1-2</sup>	SI <sup>1-2</sup>	I <sup>1-2</sup>
Internally Flawless	Very Very Slightly Included	Very Slightly Included	Slightly Included	Included

