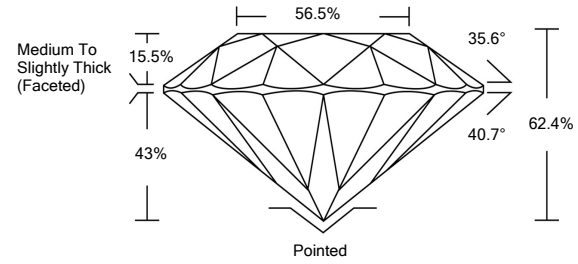




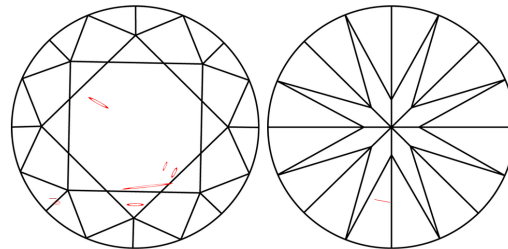
LG480177709

LABORATORY GROWN DIAMOND REPORT

PROPORTIONS

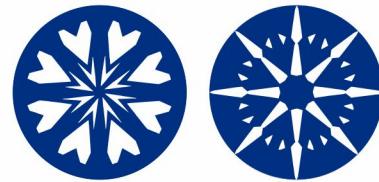


CLARITY CHARACTERISTICS



KEY TO SYMBOLS

Red symbols indicate internal characteristics. Green symbols indicate external characteristics.

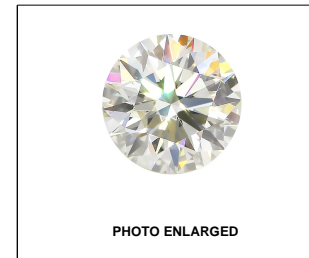


GRADING SCALES

Table with 5 columns for Color (CL) and Clarity (CLARITY) scales, listing categories like Colorless, Near Colorless, Faint, Very Light, Light and Flawless, Very Very Slightly Included, Very Slightly Included, Slightly Included, Included.

The laboratory grown diamond described in this Report (Report) has been graded, tested, analyzed, examined and/or inscribed by International Gemological Institute (IGI). A laboratory grown diamond is one that has essentially the same chemical, physical and optical properties as a mined diamond...

© INTERNATIONAL GEMOLOGICAL INSTITUTE, INC.



LABGROWN IGI LG480177709

LASERSCRIBESM

06/28/2021

IGI Report Number LG480177709

Shape and Cutting Style ROUND BRILLIANT

Measurements 6.92 - 6.94 x 4.32 mm

GRADING RESULTS

Carat Weight 1.28 CARAT

Color Grade D

Clarity Grade SI 2

Cut Grade IDEAL

ADDITIONAL GRADING INFORMATION

Polish EXCELLENT

Symmetry EXCELLENT

Fluorescence NONE

Inscription(s) LABGROWN IGI LG480177709

Comments: HEARTS & ARROWS

As Grown - No indication of post-growth treatment. This Laboratory Grown Diamond was created by High Pressure High Temperature (HPHT) growth process. Type II

Summary table of report details: IGI Report No. LG480177709, ROUND BRILLIANT, 6.92 - 6.94 x 4.32 mm, 1.28 CARAT, D, SI 2, IDEAL, 62.4%, 66.5%, Medium To Slightly Thick (Faceted), Pointed, EXCELLENT, EXCELLENT, NONE, LABGROWN IGI LG480177709.

