



485151621

**DIAMOND REPORT** **ELECTRONIC COPY**

July 26, 2021  
 IGI Report Number 485151621  
 Description NATURAL DIAMOND  
 Shape and Cutting Style ROUND BRILLIANT  
 Measurements 7.21 - 7.28 x 4.62 mm

**GRADING RESULTS**

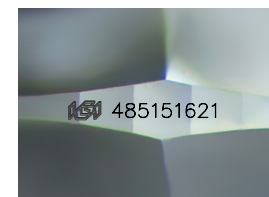
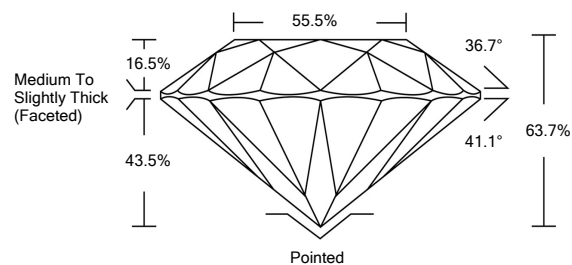
Carat Weight 1.50 CARAT  
 Color Grade G  
 Clarity Grade VS 1  
 Cut Grade EXCELLENT

**ADDITIONAL GRADING INFORMATION**

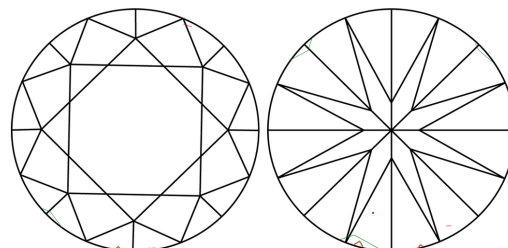
Polish EXCELLENT  
 Symmetry VERY GOOD  
 Fluorescence NONE  
 Inscription(s) IGI 485151621



**PROPORTIONS**



**CLARITY CHARACTERISTICS**



**KEY TO SYMBOLS**

Red symbols indicate internal characteristics.  
 Green symbols indicate external characteristics.

**COLOR**

D - F	G - J	K - M	N - R	S - Z	FANCY
Colorless	Near Colorless	Slightly Tinted	Very Light Color	Light Color	

**CLARITY**

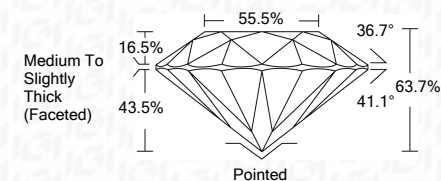
IF	VS <sup>1-2</sup>	VS <sup>1-2</sup>	SI <sup>1-2</sup>	I <sup>1-3</sup>
Internally Flawless	Very Very Slightly Included	Very Slightly Included	Slightly Included	Included



July 26, 2021  
 IGI Report Number 485151621  
 Description NATURAL DIAMOND  
 Shape and Cutting Style ROUND BRILLIANT  
 Measurements 7.21 - 7.28 x 4.62 mm

**GRADING RESULTS**

Carat Weight 1.50 CARAT  
 Color Grade G  
 Clarity Grade VS 1  
 Cut Grade EXCELLENT



**ADDITIONAL GRADING INFORMATION**

Polish EXCELLENT  
 Symmetry VERY GOOD  
 Fluorescence NONE  
 Inscription(s) IGI 485151621



**IGI**

July 26, 2021  
 IGI Report No 485151621  
 NATURAL DIAMOND  
 ROUND BRILLIANT  
 7.21 - 7.28 x 4.62 mm  
 Carat Weight 1.50 CARAT  
 Color Grade G  
 Clarity Grade VS 1  
 Cut Grade EXCELLENT  
 Depth 63.7%  
 Table 55.5%  
 Girdle Medium To Slightly Thick (Faceted)  
 Pointed  
 Polish EXCELLENT  
 Symmetry VERY GOOD  
 Fluorescence NONE  
 Inscription(s) IGI 485151621