



LG496103238

**LABORATORY GROWN DIAMOND REPORT**

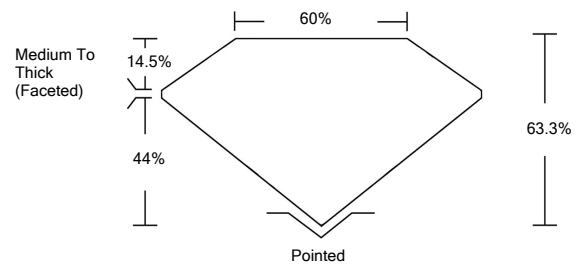
September 28, 2021  
 IGI Report Number **LG496103238**  
 Description **LABORATORY GROWN  
DIAMOND**  
 Shape and Cutting Style **OVAL BRILLIANT**  
 Measurements **7.94 X 5.67 X 3.59 MM**

**GRADING RESULTS**  
 Carat Weight **1.01 CARAT**  
 Color Grade **D**  
 Clarity Grade **VS 1**

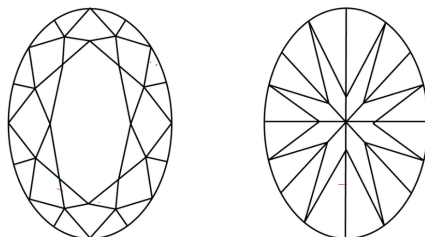
**ADDITIONAL GRADING INFORMATION**  
 Polish **EXCELLENT**  
 Symmetry **EXCELLENT**  
 Fluorescence **NONE**  
 Inscription(s) **LABGROWN IGI LG496103238**

Comments: As Grown - No indication of post-growth treatment.  
 This Laboratory Grown Diamond was created by High Pressure High Temperature (HPHT) growth process. Type II

**PROPORTIONS**



**CLARITY CHARACTERISTICS**



**KEY TO SYMBOLS**

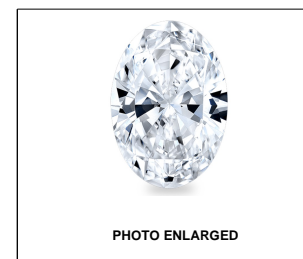
Red symbols indicate internal characteristics.  
 Green symbols indicate external characteristics.

**GRADING SCALES**

COLOR GRADING SCALE	CL COLORLESS D-F	NC NEAR COLORLESS G-J	FT FAINT K-M	VLT VERY LIGHT N-R	LT LIGHT S-Z	
CLARITY (10x) GRADING SCALE	FL FLAWLESS INTERNALLY FLAWLESS	IF INTERNAL FLAWLESS	VVS VERY VERY SLIGHTLY INCLUDED	VS VERY SLIGHTLY INCLUDED	SI SLIGHTLY INCLUDED	I INCLUDED

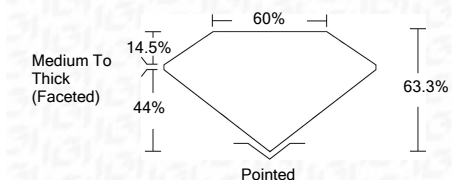
The laboratory grown diamond described in this Report (Report) has been graded, tested, analyzed, examined and/or inscribed by International Gemological Institute (IGI). A laboratory grown diamond is one that has essentially the same chemical, physical and optical properties as a mined diamond, with the exception of being grown by man (a manufactured product). IGI employs and utilizes those techniques and equipment currently available to IGI, including, without limitation, 10X magnification, corrected triplet loupe, binocular microscope, master color comparison stones, non-contact-optical measuring device, Diamond Sure™, Diamond View™, Spectrophotometer and such other instruments and/or processes as deemed appropriate by IGI. This Report includes advanced security features. A duly accredited gemologist or jeweler can advise you with respect to the importance of and interrelationship between cut, color, clarity and carat weight.  
**THIS REPORT IS NEITHER A GUARANTEE, VALUATION, NOR APPRAISAL OF THE GEMSTONE DESCRIBED HEREIN. PLEASE REVIEW THE LIMITATIONS AND RESTRICTIONS SET FORTH ONLINE. FOR ADDITIONAL INFORMATION, IMPORTANT LIMITATIONS AND DISCLAIMERS, PLEASE GO TO WWW.IGI.ORG OR CALL 1-888-BUY-IGIS.**

© INTERNATIONAL GEMOLOGICAL INSTITUTE, INC.



LASERSCRIBE<sup>SM</sup>

September 28, 2021  
 IGI Report Number **LG496103238**  
 Description **LABORATORY GROWN  
DIAMOND**  
 Shape and Cutting Style **OVAL BRILLIANT**  
 Measurements **7.94 X 5.67 X 3.59 MM**  
**GRADING RESULTS**  
 Carat Weight **1.01 CARAT**  
 Color Grade **D**  
 Clarity Grade **VS 1**



**ADDITIONAL GRADING INFORMATION**  
 Polish **EXCELLENT**  
 Symmetry **EXCELLENT**  
 Fluorescence **NONE**  
 Inscription(s) **LABGROWN IGI LG496103238**

Comments: As Grown - No indication of post-growth treatment.  
 This Laboratory Grown Diamond was created by High Pressure High Temperature (HPHT) growth process. Type II



**IGI**

September 28, 2021  
 IGI Report No. LG496103238  
**OVAL BRILLIANT**  
 7.94 X 5.67 X 3.59 MM  
 Carat Weight  
 Color Grade  
 Clarity Grade  
 Depth  
 Table  
 Grade  
 Medium To Thick (Faceted)  
 Pointed  
 EXCELLENT  
 EXCELLENT  
 NONE  
 LABGROWN IGI LG496103238  
 Comments:

As Grown - No indication of post-growth treatment.  
 This Laboratory Grown Diamond was created by High Pressure High Temperature (HPHT) growth process. Type II