



**INTERNATIONAL  
GEMOLOGICAL  
INSTITUTE**

**DIAMOND REPORT**

**ELECTRONIC COPY**

February 14, 2022  
IGI Report Number 510189132  
Description NATURAL DIAMOND  
Shape and Cutting Style ROUND BRILLIANT  
Measurements 4.28 - 4.33 x 2.59 mm

**GRADING RESULTS**

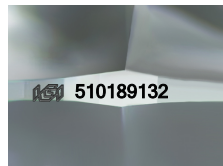
Carat Weight 0.30 CARAT  
Color Grade D  
Clarity Grade VVS 2  
Cut Grade EXCELLENT

**ADDITIONAL GRADING INFORMATION**

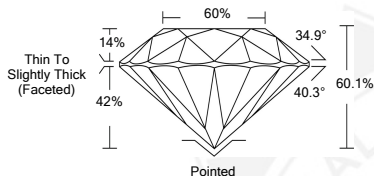
Polish EXCELLENT  
Symmetry EXCELLENT  
Fluorescence VERY SLIGHT  
Inscription(s) IGI 510189132



510189132



Sample Image Used



**COLOR**

D - F	G - J	K - M	N - R	S - Z	FANCY
Colorless	Near Colorless	Slightly Tinted	Very Light Color	Light Color	

**CLARITY**

IF	VS <sup>1-2</sup>	VS <sup>1-2</sup>	SI <sup>1-2</sup>	I <sup>1-2</sup>
Internally Flawless	Very Very Slightly Included	Very Slightly Included	Slightly Included	Included



February 14, 2022  
IGI Report Number 510189132  
NATURAL DIAMOND  
ROUND BRILLIANT  
4.28 - 4.33 x 2.59 mm  
Carat Weight 0.30 CARAT  
Color Grade D  
Clarity Grade VVS 2  
Cut Grade EXCELLENT  
Polish EXCELLENT  
Symmetry EXCELLENT  
Fluorescence VERY SLIGHT  
Inscription(s) IGI 510189132



February 14, 2022  
IGI Report Number 510189132  
NATURAL DIAMOND  
ROUND BRILLIANT  
4.28 - 4.33 x 2.59 mm  
Carat Weight 0.30 CARAT  
Color Grade D  
Clarity Grade VVS 2  
Cut Grade EXCELLENT  
Polish EXCELLENT  
Symmetry EXCELLENT  
Fluorescence VERY SLIGHT  
Inscription(s) IGI 510189132