



510189228

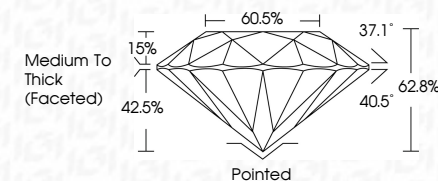
DIAMOND REPORT **ELECTRONIC COPY**



January 31, 2023
IGI Report Number 510189228
Description NATURAL DIAMOND
Shape and Cutting Style ROUND BRILLIANT
Measurements 4.16 - 4.25 x 2.64 mm

GRADING RESULTS

Carat Weight 0.30 CARAT
Color Grade D
Clarity Grade VVS 2
Cut Grade VERY GOOD



January 31, 2023
IGI Report Number 510189228
Description NATURAL DIAMOND
Shape and Cutting Style ROUND BRILLIANT
Measurements 4.16 - 4.25 x 2.64 mm

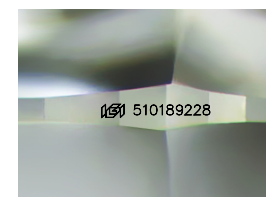
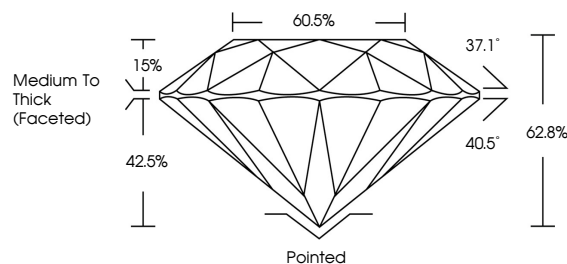
GRADING RESULTS

Carat Weight 0.30 CARAT
Color Grade D
Clarity Grade VVS 2
Cut Grade VERY GOOD

ADDITIONAL GRADING INFORMATION

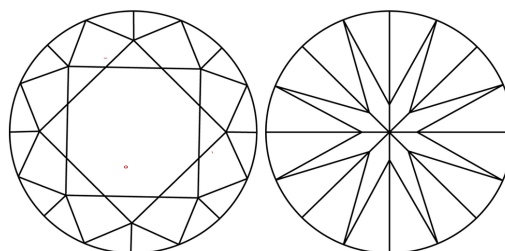
Polish EXCELLENT
Symmetry VERY GOOD
Fluorescence NONE
Inscription(s) 510189228

PROPORTIONS



Sample Image Used

CLARITY CHARACTERISTICS



KEY TO SYMBOLS

Red symbols indicate internal characteristics.
Green symbols indicate external characteristics.

COLOR

D - F	G - J	K - M	N - R	S - Z	FANCY
Colorless	Near Colorless	Slightly Tinted	Very Light Color	Light Color	

CLARITY

IF	VVS ¹⁻²	VS ¹⁻²	SI ¹⁻²	I ¹⁻³
Internally Flawless	Very Very Slightly Included	Very Slightly Included	Slightly Included	Included

ADDITIONAL GRADING INFORMATION

Polish EXCELLENT
Symmetry VERY GOOD
Fluorescence NONE
Inscription(s) 510189228



IGI

January 31, 2023
IGI Report No 510189228
NATURAL DIAMOND
ROUND BRILLIANT
4.16 - 4.25 x 2.64 mm
Carat Weight 0.30 CARAT
Color Grade D
Clarity Grade VVS2
Cut Grade VERY GOOD
Depth 62.8%
Table 60.5%
Grade Medium to Thick (Faceted)
Culet Pointed
Polish EXCELLENT
Symmetry VERY GOOD
Fluorescence NONE
Inscriptions(s) 510189228