



**INTERNATIONAL  
GEMOLOGICAL  
INSTITUTE**

**LABORATORY GROWN DIAMOND REPORT**

**IGI LABORATORY GROWN DIAMOND IDENTIFICATION REPORT**

January 31, 2022  
 IGI Report Number LG514268412  
 Description LABORATORY GROWN DIAMOND  
 Shape and Cutting Style PEAR BRILLIANT  
 Measurements 8.20 X 5.11 X 3.18 MM

**GRADING RESULTS**

Carat Weight 0.77 CARAT  
 Color Grade E  
 Clarity Grade VS 2

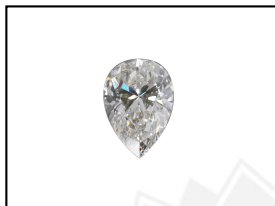
**ADDITIONAL GRADING INFORMATION**

Polish EXCELLENT  
 Symmetry EXCELLENT  
 Fluorescence NONE  
 Inscription(s) LABGROWN IGI LG514268412

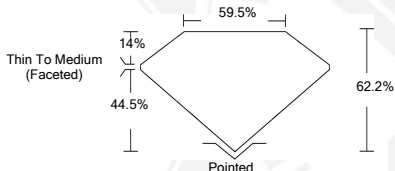
Comments: This Laboratory Grown Diamond was created by Chemical Vapor Deposition (CVD) growth process and may include post-growth treatment. Type IIa

**ELECTRONIC COPY LABORATORY GROWN  
DIAMOND REPORT**

**LG514268412**



**LASERSCRIBE<sup>SM</sup>**  
Sample Images Used



**IGI LABORATORY GROWN  
DIAMOND ID REPORT**

January 31, 2022  
 IGI Report Number **LG514268412**  
**PEAR BRILLIANT**  
**8.20 X 5.11 X 3.18 MM**  
 Carat Weight 0.77 CARAT  
 Color Grade E  
 Clarity Grade VS 2  
 Polish EXCELLENT  
 Symmetry EXCELLENT  
 Fluorescence NONE  
 Inscription(s) LABGROWN IGI  
 LG514268412

Comments: This Laboratory Grown Diamond was created by Chemical Vapor Deposition (CVD) growth process and may include post-growth treatment. Type IIa

**IGI LABORATORY GROWN  
DIAMOND ID REPORT**

January 31, 2022  
 IGI Report Number **LG514268412**  
**PEAR BRILLIANT**  
**8.20 X 5.11 X 3.18 MM**  
 Carat Weight 0.77 CARAT  
 Color Grade E  
 Clarity Grade VS 2  
 Polish EXCELLENT  
 Symmetry EXCELLENT  
 Fluorescence NONE  
 Inscription(s) LABGROWN IGI  
 LG514268412

Comments: This Laboratory Grown Diamond was created by Chemical Vapor Deposition (CVD) growth process and may include post-growth treatment. Type IIa

THIS DOCUMENT WAS PRODUCED WITH THE FOLLOWING SECURITY MEASURES: SPECIAL DOCUMENT PAPER, INK SCREENS, WATERMARK, BACKGROUND DESIGN, HOLOGRAM AND OTHER SECURITY FEATURES NOT LISTED AND DO EXCEEDED DOCUMENT SECURITY INDUSTRY GUIDELINES.

For Terms & Conditions and to verify this report, please visit [www.igi.org](http://www.igi.org)