



517222344

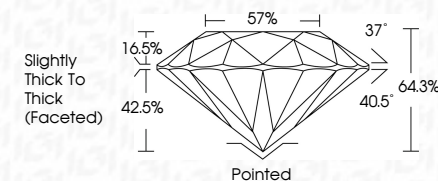
DIAMOND REPORT **ELECTRONIC COPY**



January 31, 2023
 IGI Report Number 517222344
 Description NATURAL DIAMOND
 Shape and Cutting Style ROUND BRILLIANT
 Measurements 4.20 - 4.24 x 2.71 mm

GRADING RESULTS

Carat Weight 0.31 CARAT
 Color Grade D
 Clarity Grade VVS 2
 Cut Grade VERY GOOD



January 31, 2023
 IGI Report Number 517222344
 Description NATURAL DIAMOND
 Shape and Cutting Style ROUND BRILLIANT
 Measurements 4.20 - 4.24 x 2.71 mm

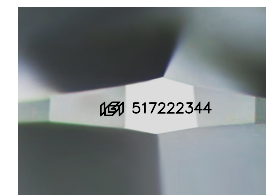
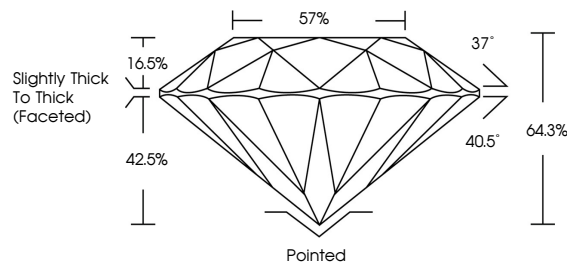
GRADING RESULTS

Carat Weight 0.31 CARAT
 Color Grade D
 Clarity Grade VVS 2
 Cut Grade VERY GOOD

ADDITIONAL GRADING INFORMATION

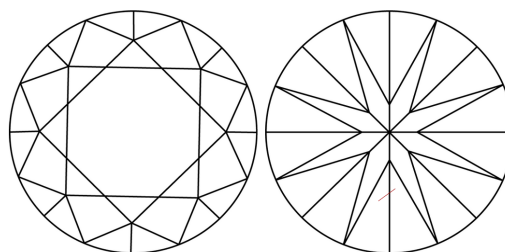
Polish VERY GOOD
 Symmetry VERY GOOD
 Fluorescence NONE
 Inscription(s) IGI 517222344

PROPORTIONS



Sample Image Used

CLARITY CHARACTERISTICS



KEY TO SYMBOLS

Red symbols indicate internal characteristics.
 Green symbols indicate external characteristics.

COLOR

D - F	G - J	K - M	N - R	S - Z	FANCY
Colorless	Near Colorless	Slightly Tinted	Very Light Color	Light Color	

CLARITY

IF	VVS ¹⁻²	VS ¹⁻²	SI ¹⁻²	I ¹⁻³
Internally Flawless	Very Very Slightly Included	Very Slightly Included	Slightly Included	Included

ADDITIONAL GRADING INFORMATION

Polish VERY GOOD
 Symmetry VERY GOOD
 Fluorescence NONE
 Inscription(s) IGI 517222344



IGI

January 31, 2023
 IGI Report No 517222344
 NATURAL DIAMOND
 ROUND BRILLIANT
 4.20 - 4.24 x 2.71 mm
 Carat Weight 0.31 CARAT
 Color Grade D
 Clarity Grade VVS2
 Cut Grade VERY GOOD
 Depth 64.3%
 Table 57%
 Girdle Grade Slightly Thick To Thick (Faceted)
 Culet Pointed
 Polish VERY GOOD
 Symmetry VERY GOOD
 Fluorescence NONE
 Inscription(s) IGI 517222344

