



**INTERNATIONAL  
GEMOLOGICAL  
INSTITUTE**

517223132

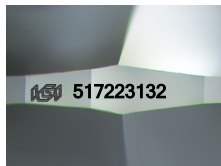


March 13, 2022  
IGI Report Number 517223132  
NATURAL DIAMOND  
ROUND BRILLIANT  
4.26 - 4.29 x 2.65 mm  
Carat Weight 0.30 CARAT  
Color Grade E  
Clarity Grade VVS 1  
Cut Grade EXCELLENT  
Polish EXCELLENT  
Symmetry EXCELLENT  
Fluorescence NONE  
Inscription(s) IGI 517223132  
Comments: IDEAL CUT ROUND  
BRILLIANT

**DIAMOND REPORT**

**ELECTRONIC COPY**

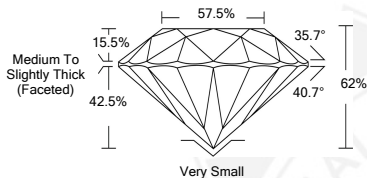
March 13, 2022  
IGI Report Number 517223132  
Description NATURAL DIAMOND  
Shape and Cutting Style ROUND BRILLIANT  
Measurements 4.26 - 4.29 x 2.65 mm



Sample Image Used

**GRADING RESULTS**

Carat Weight 0.30 CARAT  
Color Grade E  
Clarity Grade VVS 1  
Cut Grade EXCELLENT



**ADDITIONAL GRADING INFORMATION**

Polish EXCELLENT  
Symmetry EXCELLENT  
Fluorescence NONE  
Inscription(s) IGI 517223132  
Comments: IDEAL CUT ROUND BRILLIANT

**COLOR**

D - F	G - J	K - M	N - R	S - Z	FANCY
Colorless	Near Colorless	Slightly Tinted	Very Light Color	Light Color	

**CLARITY**

IF	VVS <sup>1-2</sup>	VS <sup>1-2</sup>	SI <sup>1-2</sup>	I <sup>1-2</sup>
Internally Flawless	Very Very Slightly Included	Very Slightly Included	Slightly Included	Included



March 13, 2022  
IGI Report Number 517223132  
NATURAL DIAMOND  
ROUND BRILLIANT  
4.26 - 4.29 x 2.65 mm  
Carat Weight 0.30 CARAT  
Color Grade E  
Clarity Grade VVS 1  
Cut Grade EXCELLENT  
Polish EXCELLENT  
Symmetry EXCELLENT  
Fluorescence NONE  
Inscription(s) IGI 517223132  
Comments: IDEAL CUT ROUND  
BRILLIANT

