



522249546

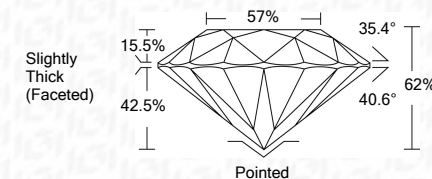
**DIAMOND REPORT** **ELECTRONIC COPY**



April 11, 2022  
IGI Report Number 522249546  
Description NATURAL DIAMOND  
Shape and Cutting Style ROUND BRILLIANT  
Measurements 6.30 - 6.40 x 3.95 mm

**GRADING RESULTS**

Carat Weight 1.00 CARAT  
Color Grade F  
Clarity Grade VS 1  
Cut Grade VERY GOOD



April 11, 2022  
IGI Report Number 522249546  
Description NATURAL DIAMOND  
Shape and Cutting Style ROUND BRILLIANT  
Measurements 6.30 - 6.40 x 3.95 mm

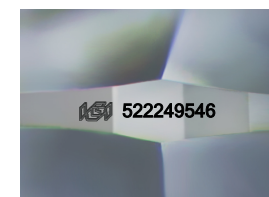
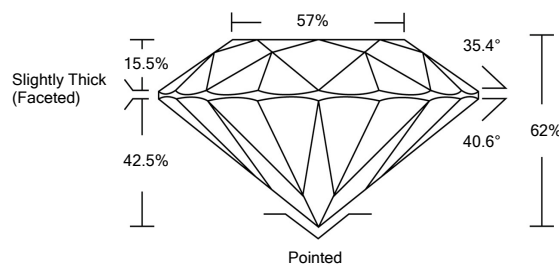
**GRADING RESULTS**

Carat Weight 1.00 CARAT  
Color Grade F  
Clarity Grade VS 1  
Cut Grade VERY GOOD

**ADDITIONAL GRADING INFORMATION**

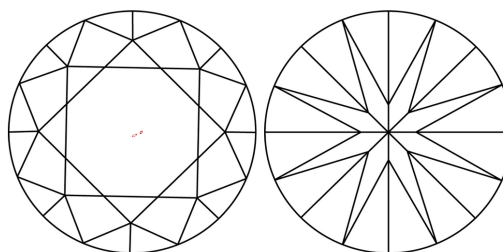
Polish EXCELLENT  
Symmetry GOOD  
Fluorescence NONE  
Inscription(s) IGI 522249546

**PROPORTIONS**



Sample Image Used

**CLARITY CHARACTERISTICS**



**KEY TO SYMBOLS**

Red symbols indicate internal characteristics.  
Green symbols indicate external characteristics.

**COLOR**

D - F	G - J	K - M	N - R	S - Z	FANCY
Colorless	Near Colorless	Slightly Tinted	Very Light Color	Light Color	

**CLARITY**

IF	VVS <sup>1-2</sup>	VS <sup>1-2</sup>	SI <sup>1-2</sup>	I <sup>1-3</sup>
Internally Flawless	Very Very Slightly Included	Very Slightly Included	Slightly Included	Included

**ADDITIONAL GRADING INFORMATION**

Polish EXCELLENT  
Symmetry GOOD  
Fluorescence NONE  
Inscription(s) IGI 522249546



**IGI**



April 11, 2022  
IGI Report No 522249546  
NATURAL DIAMOND  
ROUND BRILLIANT  
6.30 - 6.40 x 3.95 mm  
Carat Weight 1.00 CARAT  
Color Grade F  
Clarity Grade VS 1  
Cut Grade VERY GOOD  
Depth 62%  
Table 57%  
Girdle Slightly Thick (Faceted)  
Culet Pointed  
Polish EXCELLENT  
Symmetry GOOD  
Fluorescence NONE  
Inscription(s) IGI 522249546