



**ELECTRONIC COPY**

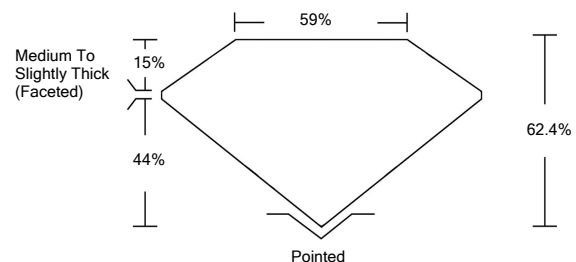
**LABORATORY GROWN DIAMOND REPORT**

April 6, 2022	
IGI Report Number	<b>LG523276678</b>
Description	<b>LABORATORY GROWN DIAMOND</b>
Shape and Cutting Style	<b>OVAL BRILLIANT</b>
Measurements	<b>10.36 X 7.32 X 4.57 MM</b>
<b>GRADING RESULTS</b>	
Carat Weight	<b>2.09 CARATS</b>
Color Grade	<b>D</b>
Clarity Grade	<b>VVS 2</b>
<b>ADDITIONAL GRADING INFORMATION</b>	
Polish	<b>EXCELLENT</b>
Symmetry	<b>EXCELLENT</b>
Fluorescence	<b>NONE</b>
Inscription(s)	<b>LABGROWN IGI LG523276678</b>

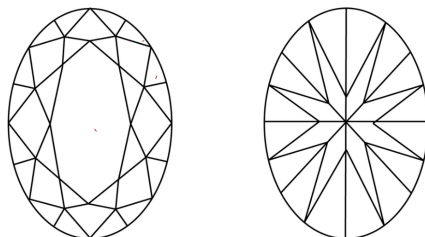
Comments: As Grown - No indication of post-growth treatment.  
This Laboratory Grown Diamond was created by High Pressure High Temperature (HPHT) growth process. Type II

LG523276678

**PROPORTIONS**



**CLARITY CHARACTERISTICS**

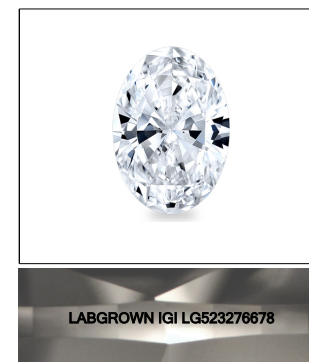


**KEY TO SYMBOLS**

Red symbols indicate internal characteristics.  
Green symbols indicate external characteristics.

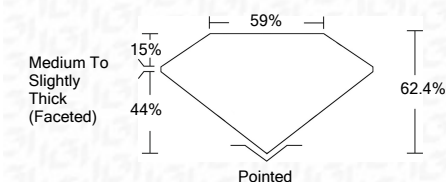
**GRADING SCALES**

COLOR GRADING SCALE	CL	NC	FT	VL	LT	
	COLORLESS D-F	NEAR COLORLESS G-J	FAINT K-M	VERY LIGHT N-R	LIGHT S-Z	
CLARITY (10x) GRADING SCALE	FL	IF	VVS	VS	SI	I
	FLAWLESS INTERNALLY FLAWLESS	VERY VERY SLIGHTLY INCLUDED	VERY SLIGHTLY INCLUDED	SLIGHTLY INCLUDED	INCLUDED	



**LASERSCRIBE<sup>SM</sup>**  
Sample Image Used

April 6, 2022	
IGI Report Number	<b>LG523276678</b>
Description	<b>LABORATORY GROWN DIAMOND</b>
Shape and Cutting Style	<b>OVAL BRILLIANT</b>
Measurements	<b>10.36 X 7.32 X 4.57 MM</b>
<b>GRADING RESULTS</b>	
Carat Weight	<b>2.09 CARATS</b>
Color Grade	<b>D</b>
Clarity Grade	<b>VVS 2</b>



<b>ADDITIONAL GRADING INFORMATION</b>	
Polish	<b>EXCELLENT</b>
Symmetry	<b>EXCELLENT</b>
Fluorescence	<b>NONE</b>
Inscription(s)	<b>LABGROWN IGI LG523276678</b>

Comments: As Grown - No indication of post-growth treatment.  
This Laboratory Grown Diamond was created by High Pressure High Temperature (HPHT) growth process. Type II



April 6, 2022	IGI Report No. LG523276678
IGI Report No. LG523276678	IGI Report No. LG523276678
Shape and Cutting Style	<b>OVAL BRILLIANT</b>
Measurements	<b>10.36 X 7.32 X 4.57 MM</b>
Carat Weight	<b>2.09 CARATS</b>
Color Grade	<b>D</b>
Clarity Grade	<b>VVS 2</b>
Depth	<b>62.4%</b>
Table	<b>15%</b>
Girdle	<b>Medium To Slightly Thick (Faceted)</b>
Culet	<b>Pointed</b>
Polish	<b>EXCELLENT</b>
Symmetry	<b>EXCELLENT</b>
Fluorescence	<b>NONE</b>
Inscription(s)	<b>LABGROWN IGI LG523276678</b>
Comments:	<b>As Grown - No indication of post-growth treatment. This Laboratory Grown Diamond was created by High Pressure High Temperature (HPHT) growth process. Type II</b>