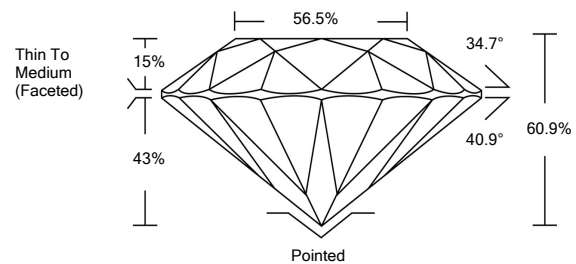




ELECTRONIC COPY

LG524210945

PROPORTIONS



GRADING SCALES

Table showing color grading scales (CL to LT) and clarity grading scales (FL to I).

April 14, 2022

IGI Report Number

LG524210945

Description

LABORATORY GROWN DIAMOND

Shape and Cutting Style

ROUND BRILLIANT

Measurements

8.37 - 8.44 X 5.13 MM

GRADING RESULTS

Carat Weight

2.18 CARATS

Color Grade

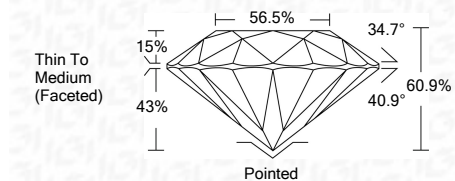
E

Clarity Grade

VVS 2

Cut Grade

IDEAL



ADDITIONAL GRADING INFORMATION

Polish

EXCELLENT

Symmetry

EXCELLENT

Fluorescence

NONE

Inscription(s)

LABGROWN IGI LG524210945

Comments: As Grown - No indication of post-growth treatment. This Laboratory Grown Diamond was created by High Pressure High Temperature (HPHT) growth process. Type II



IGI

April 14, 2022

IGI Report Number

LG524210945

Description

LABORATORY GROWN DIAMOND

Shape and Cutting Style

ROUND BRILLIANT

Measurements

8.37 - 8.44 X 5.13 MM

GRADING RESULTS

Carat Weight

2.18 CARATS

Color Grade

E

Clarity Grade

VVS 2

Cut Grade

IDEAL

ADDITIONAL GRADING INFORMATION

Polish

EXCELLENT

Symmetry

EXCELLENT

Fluorescence

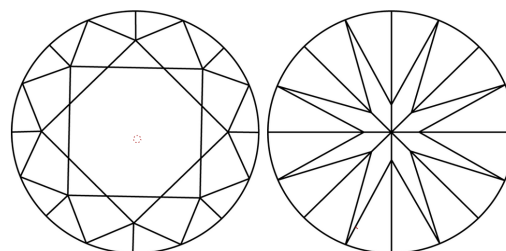
NONE

Inscription(s)

LABGROWN IGI LG524210945

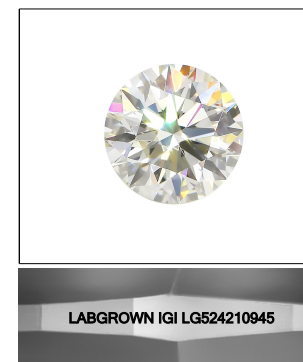
Comments: As Grown - No indication of post-growth treatment. This Laboratory Grown Diamond was created by High Pressure High Temperature (HPHT) growth process. Type II

CLARITY CHARACTERISTICS



KEY TO SYMBOLS

Red symbols indicate internal characteristics. Green symbols indicate external characteristics.



LASERSCRIBE SM Sample Image Used



Summary table of report details including date, report number, description, measurements, grading results, and additional information.