



ELECTRONIC COPY

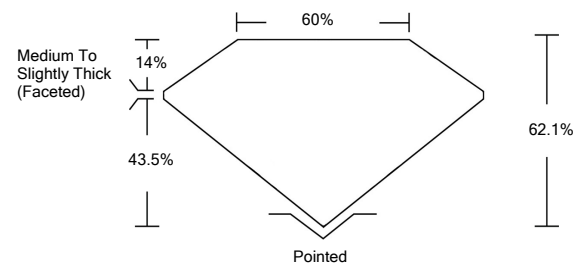
LABORATORY GROWN DIAMOND REPORT

LG526269896

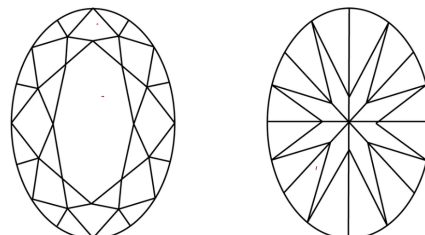
GRADING SCALES

COLOR GRADING SCALE	CL	NC	FT	VLT	LT	
	COLORLESS D-F	NEAR COLORLESS G-J	FAINT K-M	VERY LIGHT N-R	LIGHT S-Z	
CLARITY (10x) GRADING SCALE	FL	IF	VVS	VS	SI	I
	FLAWLESS INTERNALLY FLAWLESS	VERY VERY SLIGHTLY INCLUDED	VERY SLIGHTLY INCLUDED	SLIGHTLY INCLUDED	INCLUDED	

PROPORTIONS

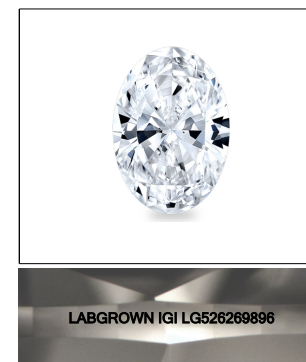


CLARITY CHARACTERISTICS



KEY TO SYMBOLS

Red symbols indicate internal characteristics.
Green symbols indicate external characteristics.



LASERSCRIBESM
Sample Image Used

April 25, 2022

IGI Report Number

LG526269896

Description

**LABORATORY GROWN
DIAMOND**

Shape and Cutting Style

OVAL BRILLIANT

Measurements

10.31 X 7.18 X 4.46 MM

GRADING RESULTS

Carat Weight

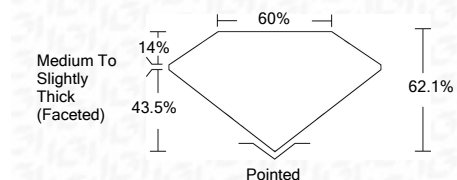
2.07 CARATS

Color Grade

E

Clarity Grade

VS 1



ADDITIONAL GRADING INFORMATION

Polish

EXCELLENT

Symmetry

EXCELLENT

Fluorescence

NONE

Inscription(s)

LABGROWN IGI LG526269896

Comments: This Laboratory Grown Diamond was created by Chemical Vapor Deposition (CVD) growth process and may include post-growth treatment.
Type IIa

April 25, 2022

IGI Report Number

LG526269896

Description

**LABORATORY GROWN
DIAMOND**

Shape and Cutting Style

OVAL BRILLIANT

Measurements

10.31 X 7.18 X 4.46 MM

GRADING RESULTS

Carat Weight

2.07 CARATS

Color Grade

E

Clarity Grade

VS 1

ADDITIONAL GRADING INFORMATION

Polish

EXCELLENT

Symmetry

EXCELLENT

Fluorescence

NONE

Inscription(s)

LABGROWN IGI LG526269896

Comments: This Laboratory Grown Diamond was created by Chemical Vapor Deposition (CVD) growth process and may include post-growth treatment.
Type IIa



IGI

April 25, 2022	IGI Report No. LG526269896	OVAL BRILLIANT	10.31 X 7.18 X 4.46 MM	2.07 CARATS	E	VS 1	62.1%	60%	Medium To Slightly Thick (Faceted)	Pointed	EXCELLENT	EXCELLENT	NONE	LABGROWN IGI LG526269896	Comments:
															This Laboratory Grown Diamond was created by Chemical Vapor Deposition (CVD) growth process and may include post-growth treatment. Type IIa