



**INTERNATIONAL
GEMOLOGICAL
INSTITUTE**

DIAMOND REPORT

ELECTRONIC COPY

May 16, 2022
 IGI Report Number 528209566
 Description NATURAL DIAMOND
 Shape and Cutting Style ROUND BRILLIANT
 Measurements 4.22 - 4.25 x 2.71 mm

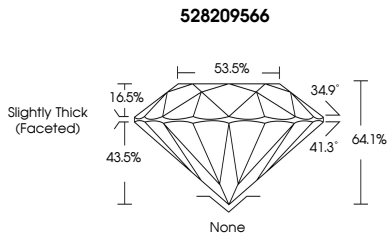
GRADING RESULTS

Carat Weight 0.30 CARAT
 Color Grade I
 Clarity Grade VVS 2
 Cut Grade VERY GOOD

ADDITIONAL GRADING INFORMATION

Polish VERY GOOD
 Symmetry VERY GOOD
 Fluorescence VERY SLIGHT

Identification Features CLOUD



COLOR

D - F G - J K - M N - R S - Z FANCY

Colorless Near Colorless Slightly Tinted Very Light Color Light Color

CLARITY

IF VVS¹⁻² VS¹⁻² SI¹⁻² I¹⁻²

Internally Flawless Very Very Slightly Included Very Slightly Included Slightly Included Included



May 16, 2022
 IGI Report Number 528209566
 NATURAL DIAMOND
 ROUND BRILLIANT
 4.22 - 4.25 x 2.71 mm
 Carat Weight 0.30 CARAT
 Color Grade I
 Clarity Grade VVS 2
 Cut Grade VERY GOOD
 Polish VERY GOOD
 Symmetry VERY GOOD
 Fluorescence VERY SLIGHT



May 16, 2022
 IGI Report Number 528209566
 NATURAL DIAMOND
 ROUND BRILLIANT
 4.22 - 4.25 x 2.71 mm
 Carat Weight 0.30 CARAT
 Color Grade I
 Clarity Grade VVS 2
 Cut Grade VERY GOOD
 Polish VERY GOOD
 Symmetry VERY GOOD
 Fluorescence VERY SLIGHT