



ELECTRONIC COPY

LABORATORY GROWN DIAMOND REPORT

May 25, 2022
 IGI Report Number **LG529282588**
 Description **LABORATORY GROWN
DIAMOND**
 Shape and Cutting Style **OVAL BRILLIANT**
 Measurements **11.91 X 8.31 X 5.25 MM**

GRADING RESULTS

Carat Weight **3.21 CARATS**
 Color Grade **H**
 Clarity Grade **VS 2**

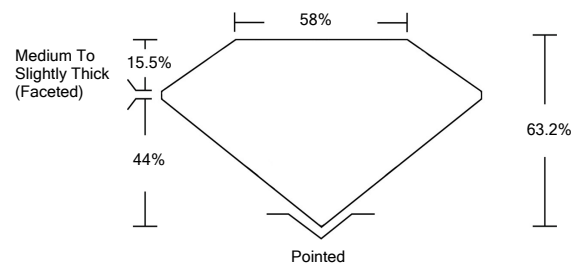
ADDITIONAL GRADING INFORMATION

Polish **EXCELLENT**
 Symmetry **EXCELLENT**
 Fluorescence **NONE**
 Inscription(s) **LABGROWN IGI LG529282588**

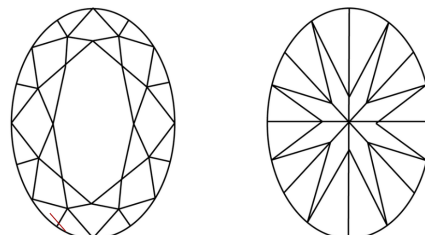
Comments: This Laboratory Grown Diamond was created by Chemical Vapor Deposition (CVD) growth process and may include post-growth treatment.
 Type IIa

LG529282588

PROPORTIONS



CLARITY CHARACTERISTICS

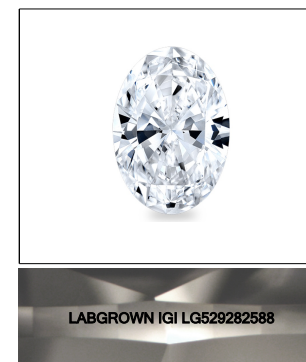


KEY TO SYMBOLS

Red symbols indicate internal characteristics.
 Green symbols indicate external characteristics.

GRADING SCALES

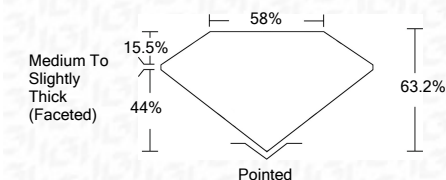
COLOR GRADING SCALE	CL	NC	FT	VL	LT	
	COLORLESS D-F	NEAR COLORLESS G-J	FAINT K-M	VERY LIGHT N-R	LIGHT S-Z	
CLARITY (10x) GRADING SCALE	FL	IF	VVS	VS	SI	I
	FLAWLESS INTERNALLY FLAWLESS	VERY VERY SLIGHTLY INCLUDED	VERY SLIGHTLY INCLUDED	SLIGHTLY INCLUDED	INCLUDED	



LASERSCRIBESM

Sample Image Used

May 25, 2022
 IGI Report Number **LG529282588**
 Description **LABORATORY GROWN
DIAMOND**
 Shape and Cutting Style **OVAL BRILLIANT**
 Measurements **11.91 X 8.31 X 5.25 MM**
GRADING RESULTS
 Carat Weight **3.21 CARATS**
 Color Grade **H**
 Clarity Grade **VS 2**



ADDITIONAL GRADING INFORMATION

Polish **EXCELLENT**
 Symmetry **EXCELLENT**
 Fluorescence **NONE**

Inscription(s) **LABGROWN IGI LG529282588**

Comments: This Laboratory Grown Diamond was created by Chemical Vapor Deposition (CVD) growth process and may include post-growth treatment.
 Type IIa



IGI

May 25, 2022	IGI Report No. LG529282588	3.21 CARATS	H
IGI Report No. LG529282588	OVAL BRILLIANT	3.21 CARATS	H
11.91 X 8.31 X 5.25 MM	Carat Weight	3.21 CARATS	VS 2
Color Grade	H	63.2%	58%
Clarity Grade	VS 2	Medium To Slightly Thick (Faceted)	Pointed
Depth	63.2%	EXCELLENT	EXCELLENT
Table	58%	EXCELLENT	EXCELLENT
Girdle	Medium To Slightly Thick (Faceted)	NONE	NONE
Culet	Pointed	LABGROWN IGI	LG529282588
Polish	EXCELLENT	Inscription(s)	
Symmetry	EXCELLENT	Comments:	
Fluorescence	NONE	This Laboratory Grown Diamond was created by Chemical Vapor Deposition (CVD) growth process and may include post-growth treatment.	Type IIa
Inscription(s)	LABGROWN IGI LG529282588		

