



**INTERNATIONAL
GEMOLOGICAL
INSTITUTE**

533203038

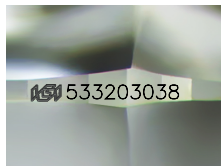


July 7, 2022
IGI Report Number 533203038
NATURAL DIAMOND
ROUND BRILLIANT
4.71 - 4.75 x 2.95 mm
Carat Weight 0.40 CARAT
Color Grade H
Clarity Grade VVS 1
Cut Grade EXCELLENT
Polish EXCELLENT
Symmetry EXCELLENT
Fluorescence NONE
Inscription(s) IGI 533203038
Comments: IDEAL CUT ROUND BRILLIANT

DIAMOND REPORT

ELECTRONIC COPY

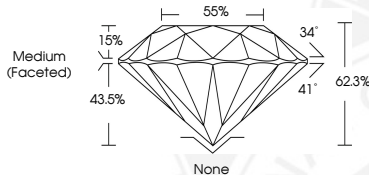
July 7, 2022
IGI Report Number 533203038
Description NATURAL DIAMOND
Shape and Cutting Style ROUND BRILLIANT
Measurements 4.71 - 4.75 x 2.95 mm



Sample Image Used

GRADING RESULTS

Carat Weight 0.40 CARAT
Color Grade H
Clarity Grade VVS 1
Cut Grade EXCELLENT



July 7, 2022
IGI Report Number 533203038
NATURAL DIAMOND
ROUND BRILLIANT
4.71 - 4.75 x 2.95 mm
Carat Weight 0.40 CARAT
Color Grade H
Clarity Grade VVS 1
Cut Grade EXCELLENT
Polish EXCELLENT
Symmetry EXCELLENT
Fluorescence NONE
Inscription(s) IGI 533203038
Comments: IDEAL CUT ROUND BRILLIANT

ADDITIONAL GRADING INFORMATION

Polish EXCELLENT
Symmetry EXCELLENT
Fluorescence NONE

Identification Features FEATHER, CLOUD
Inscription(s) IGI 533203038
Comments: IDEAL CUT ROUND BRILLIANT

COLOR

D - F	G - J	K - M	N - R	S - Z	FANCY
Colorless	Near Colorless	Slightly Tinted	Very Light Color	Light Color	

CLARITY

IF	VVS ¹⁻²	VS ¹⁻²	SI ¹⁻²	I ¹⁻²
Internally Flawless	Very Very Slightly Included	Very Slightly Included	Slightly Included	Included

