

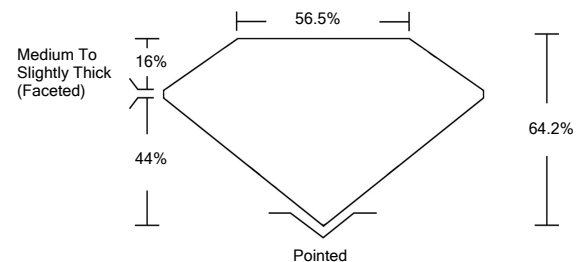


**ELECTRONIC COPY**

**LABORATORY GROWN DIAMOND REPORT**

LG534237583

**PROPORTIONS**



**GRADING SCALES**

|                             |                              |                             |                        |                   |           |   |
|-----------------------------|------------------------------|-----------------------------|------------------------|-------------------|-----------|---|
| COLOR GRADING SCALE         | CL                           | NC                          | FT                     | VL                | LT        |   |
|                             | COLORLESS D-F                | NEAR COLORLESS G-J          | FAINT K-M              | VERY LIGHT N-R    | LIGHT S-Z |   |
| CLARITY (10x) GRADING SCALE | FL                           | IF                          | VVS                    | VS                | SI        | I |
|                             | FLAWLESS INTERNALLY FLAWLESS | VERY VERY SLIGHTLY INCLUDED | VERY SLIGHTLY INCLUDED | SLIGHTLY INCLUDED | INCLUDED  |   |

June 20, 2022

IGI Report Number

**LG534237583**

Description

**LABORATORY GROWN DIAMOND**

Shape and Cutting Style

**PEAR BRILLIANT**

Measurements

**13.31 X 8.30 X 5.33 MM**

**GRADING RESULTS**

Carat Weight

**3.46 CARATS**

Color Grade

**E**

Clarity Grade

**VS 1**

June 20, 2022

IGI Report Number

**LG534237583**

Description

**LABORATORY GROWN DIAMOND**

Shape and Cutting Style

**PEAR BRILLIANT**

Measurements

**13.31 X 8.30 X 5.33 MM**

**GRADING RESULTS**

Carat Weight

**3.46 CARATS**

Color Grade

**E**

Clarity Grade

**VS 1**

**ADDITIONAL GRADING INFORMATION**

Polish

**EXCELLENT**

Symmetry

**EXCELLENT**

Fluorescence

**NONE**

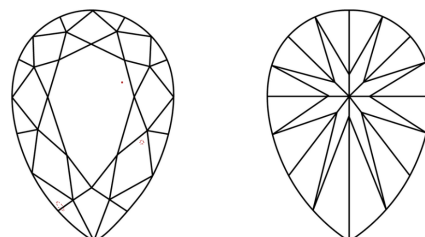
Inscription(s)

**LABGROWN IGI LG534237583**

Comments: This Laboratory Grown Diamond was created by Chemical Vapor Deposition (CVD) growth process and may include post-growth treatment.

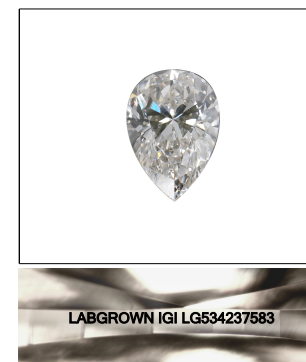
Type IIa

**CLARITY CHARACTERISTICS**



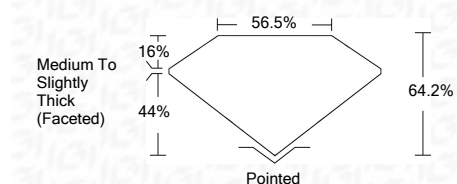
**KEY TO SYMBOLS**

Red symbols indicate internal characteristics.  
Green symbols indicate external characteristics.



**LASERSCRIBE<sup>SM</sup>**

Sample Image Used



**ADDITIONAL GRADING INFORMATION**

Polish

**EXCELLENT**

Symmetry

**EXCELLENT**

Fluorescence

**NONE**

Inscription(s)

**LABGROWN IGI LG534237583**

Comments: This Laboratory Grown Diamond was created by Chemical Vapor Deposition (CVD) growth process and may include post-growth treatment.

Type IIa



|                            |                                                                                                                                             |   |      |       |       |                                    |         |           |           |      |                          |
|----------------------------|---------------------------------------------------------------------------------------------------------------------------------------------|---|------|-------|-------|------------------------------------|---------|-----------|-----------|------|--------------------------|
| IGI Report No. LG534237583 | 3.46 CARATS                                                                                                                                 | E | VS 1 | 64.2% | 56.5% | Medium To Slightly Thick (Faceted) | Pointed | EXCELLENT | EXCELLENT | NONE | LABGROWN IGI LG534237583 |
| PEAR BRILLIANT             | 13.31 X 8.30 X 5.33 MM                                                                                                                      |   |      |       |       |                                    |         |           |           |      |                          |
| Carat Weight               |                                                                                                                                             |   |      |       |       |                                    |         |           |           |      |                          |
| Color Grade                |                                                                                                                                             |   |      |       |       |                                    |         |           |           |      |                          |
| Clarity Grade              |                                                                                                                                             |   |      |       |       |                                    |         |           |           |      |                          |
| Depth                      |                                                                                                                                             |   |      |       |       |                                    |         |           |           |      |                          |
| Table                      |                                                                                                                                             |   |      |       |       |                                    |         |           |           |      |                          |
| Girdle                     |                                                                                                                                             |   |      |       |       |                                    |         |           |           |      |                          |
| Culet                      |                                                                                                                                             |   |      |       |       |                                    |         |           |           |      |                          |
| Polish                     |                                                                                                                                             |   |      |       |       |                                    |         |           |           |      |                          |
| Symmetry                   |                                                                                                                                             |   |      |       |       |                                    |         |           |           |      |                          |
| Fluorescence               |                                                                                                                                             |   |      |       |       |                                    |         |           |           |      |                          |
| Inscription(s)             |                                                                                                                                             |   |      |       |       |                                    |         |           |           |      |                          |
| Comments:                  | This Laboratory Grown Diamond was created by Chemical Vapor Deposition (CVD) growth process and may include post-growth treatment. Type IIa |   |      |       |       |                                    |         |           |           |      |                          |