



ELECTRONIC COPY

LABORATORY GROWN DIAMOND REPORT

July 15, 2022
 IGI Report Number **LG538275079**
 Description **LABORATORY GROWN
DIAMOND**
 Shape and Cutting Style **OVAL BRILLIANT**
 Measurements **11.44 X 8.01 X 5.05 MM**

GRADING RESULTS

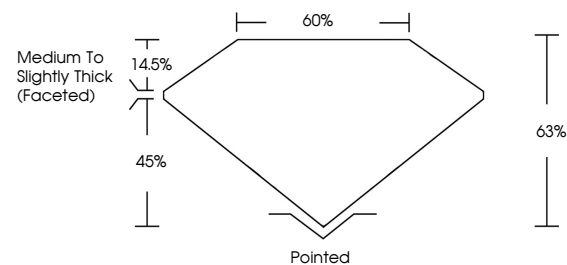
Carat Weight **2.87 CARATS**
 Color Grade **E**
 Clarity Grade **SI 1**

ADDITIONAL GRADING INFORMATION

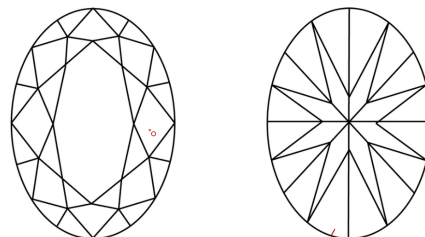
Polish **EXCELLENT**
 Symmetry **EXCELLENT**
 Fluorescence **NONE**
 Inscription(s) **LABGROWN IGI LG538275079**
 Comments: This Laboratory Grown Diamond was created by Chemical Vapor Deposition (CVD) growth process and may include post-growth treatment. Type IIa

LG538275079

PROPORTIONS



CLARITY CHARACTERISTICS

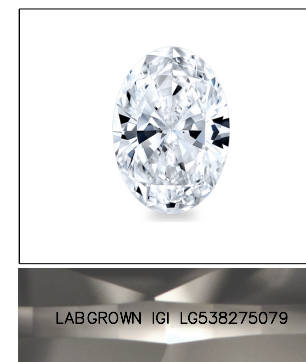


KEY TO SYMBOLS

Red symbols indicate internal characteristics.
 Green symbols indicate external characteristics.

GRADING SCALES

| COLOR GRADING SCALE | CL | NC | FT | VL | LT | |
|-----------------------------|------------------------------|-----------------------------|------------------------|-------------------|-----------|---|
| | COLORLESS D-F | NEAR COLORLESS G-J | FAINT K-M | VERY LIGHT N-R | LIGHT S-Z | |
| CLARITY (10x) GRADING SCALE | FL | IF | VVS | VS | SI | I |
| | FLAWLESS INTERNALLY FLAWLESS | VERY VERY SLIGHTLY INCLUDED | VERY SLIGHTLY INCLUDED | SLIGHTLY INCLUDED | INCLUDED | |

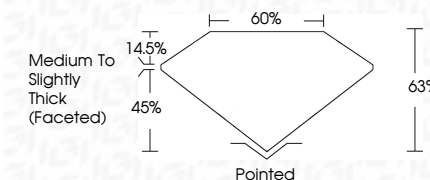


LABGROWN IGI LG538275079

LASERSCRIBESM

Sample Image Used

July 15, 2022
 IGI Report Number **LG538275079**
 Description **LABORATORY GROWN
DIAMOND**
 Shape and Cutting Style **OVAL BRILLIANT**
 Measurements **11.44 X 8.01 X 5.05 MM**
GRADING RESULTS
 Carat Weight **2.87 CARATS**
 Color Grade **E**
 Clarity Grade **SI 1**



ADDITIONAL GRADING INFORMATION

Polish **EXCELLENT**
 Symmetry **EXCELLENT**
 Fluorescence **NONE**
 Inscription(s) **LABGROWN IGI LG538275079**
 Comments: This Laboratory Grown Diamond was created by Chemical Vapor Deposition (CVD) growth process and may include post-growth treatment. Type IIa



IGI

| | | | | | | | | | | | | | | | | | | | | | | | |
|---------------|---------------------------|--------------|-------------|-------------|---|-------|-----|-------|-----|---------------|------------------------------------|-------|---------|--------|-----------|----------|-----------|--------------|------|----------------|--------------------------|-----------|--|
| July 15, 2022 | IGI Report No LG538275079 | Carat Weight | 2.87 CARATS | Color Grade | E | Depth | 65% | Table | 60% | Clarity Grade | Medium to Slightly Thick (Faceted) | Culet | Pointed | Polish | EXCELLENT | Symmetry | EXCELLENT | Fluorescence | NONE | Inscription(s) | LABGROWN IGI LG538275079 | Comments: | |
|---------------|---------------------------|--------------|-------------|-------------|---|-------|-----|-------|-----|---------------|------------------------------------|-------|---------|--------|-----------|----------|-----------|--------------|------|----------------|--------------------------|-----------|--|

This Laboratory Grown Diamond was created by Chemical Vapor Deposition (CVD) growth process and may include post-growth treatment. Type IIa