



**INTERNATIONAL
GEMOLOGICAL
INSTITUTE**

ELECTRONIC COPY

LABORATORY GROWN DIAMOND REPORT

LG444073342

**IGI LABORATORY GROWN
DIAMOND ID REPORT**

09/26/2020

IGI Report Number **LG444073342**

**SQUARE CUSHION MODIFIED
BRILLIANT**

5.33 x 5.25 x 3.38 MM

Carat Weight 0.72 CARAT

Color Grade E

Clarity Grade VVS 1

Polish EXCELLENT

Symmetry VERY GOOD

Fluorescence NONE

Inscription(s) LABGROWN IGI
LG444073342

Comments: This Laboratory grown diamond was created by high pressure high temperature process (HPHT)-br/>Type II

IGI GEMOLOGICAL REPORT

IGI LABORATORY GROWN DIAMOND IDENTIFICATION REPORT

09/26/2020

IGI Report Number **LG444073342**

Shape and Cutting Style **SQUARE CUSHION MODIFIED BRILLIANT**

Measurements **5.33 x 5.25 x 3.38 MM**

GRADING RESULTS

Carat Weight 0.72 CARAT

Color Grade E

Clarity Grade VVS 1

ADDITIONAL GRADING INFORMATION

Polish EXCELLENT

Symmetry VERY GOOD

Fluorescence NONE

Inscription(s) LABGROWN IGI LG444073342

Comments: This Laboratory grown diamond was created by high pressure high temperature process (HPHT) Type II



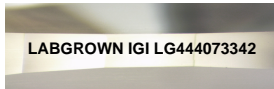
This Laboratory Grown Diamond (LGD) described in this Report has been analyzed, graded and Laserscribed® by International Gemological Institute (IGI). A LGD has essentially the chemical, physical and optical properties as a mined diamond, with the exception of being man-made (a manufactured product). LGD's are typically produced by CVD (chemical vapor deposition) or by HPHT (high pressure high temperature) growth processes and may include post growth modifications to change the color. IGI utilizes the most advanced techniques and equipment currently available including, binocular microscopes, diamond color masters, non-contact-optical measuring device, a wide range analytical techniques including FTIR, UV-VIS-NIR, raman spectroscopy, and fluorescence analysis at various excitation wavelengths. This Report includes advanced security features. This Report is neither a guarantee, valuation nor appraisal and by making the report IGI does not agree to purchase or replace the article.
INTERNATIONAL GEMOLOGICAL INSTITUTE, INC

For Terms & Conditions, please visit www.igi.org

ADDITIONAL INFORMATION

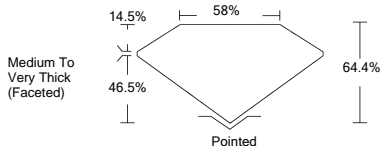


PHOTO ENLARGED



LABGROWN IGI LG444073342

LASERSCRIBE SM



**IGI LABORATORY GROWN
DIAMOND ID REPORT**

09/26/2020

IGI Report Number **LG444073342**

**SQUARE CUSHION MODIFIED
BRILLIANT**

5.33 x 5.25 x 3.38 MM

Carat Weight 0.72 CARAT

Color Grade E

Clarity Grade VVS 1

Polish EXCELLENT

Symmetry VERY GOOD

Fluorescence NONE

Inscription(s) LABGROWN IGI
LG444073342

Comments: This Laboratory grown diamond was created by high pressure high temperature process (HPHT)-br/>Type II

THE DOCUMENT WAS PRODUCED WITH THE FOLLOWING SECURITY MEASURES: SPECIAL DOCUMENT PAPER, INK SCREENS, WATERMARK, BACKGROUND DESIGNS HOLOGRAM AND OTHER SECURITY FEATURES NOT LISTED AND DO EXCEED DOCUMENT SECURITY INDUSTRY GUIDELINES