



LG445027410

10/07/2020

IGI Report Number LG445027410

ROUND BRILLIANT

4.75 - 4.77 X 2.89 MM

Carat Weight	0.40 CARAT
Color Grade	E
Clarity Grade	VVS 1
Cut Grade	IDEAL
Polish	EXCELLENT
Symmetry	EXCELLENT
Fluorescence	NONE
Inscription(s)	LABGROWN IGI LG445027410

Comments: This Laboratory grown diamond was created by high pressure high temperature process (HPHT) Type II

IGI GEMOLOGICAL REPORT

IGI LABORATORY GROWN DIAMOND IDENTIFICATION REPORT

10/07/2020
 IGI Report Number LG445027410
 Shape and Cutting Style ROUND BRILLIANT
 Measurements 4.75 - 4.77 X 2.89 MM

GRADING RESULTS

Carat Weight 0.40 CARAT
 Color Grade E
 Clarity Grade VVS 1
 Cut Grade IDEAL

ADDITIONAL GRADING INFORMATION

Polish EXCELLENT
 Symmetry EXCELLENT
 Fluorescence NONE
 Inscription(s) LABGROWN IGI LG445027410

Comments: This Laboratory grown diamond was created by high pressure high temperature process (HPHT) Type II



ADDITIONAL INFORMATION

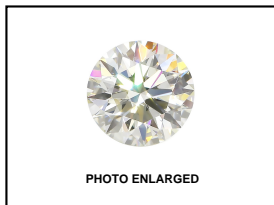
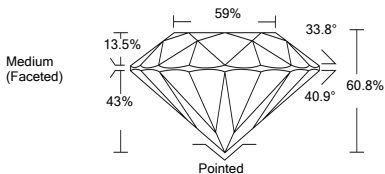


PHOTO ENLARGED



LABGROWN IGI LG445027410

LASERSCRIBE SM



IGI LABORATORY GROWN DIAMOND ID REPORT

10/07/2020

IGI Report Number LG445027410

ROUND BRILLIANT

4.75 - 4.77 X 2.89 MM

Carat Weight	0.40 CARAT
Color Grade	E
Clarity Grade	VVS 1
Cut Grade	IDEAL
Polish	EXCELLENT
Symmetry	EXCELLENT
Fluorescence	NONE
Inscription(s)	LABGROWN IGI LG445027410

Comments: This Laboratory grown diamond was created by high pressure high temperature process (HPHT) Type II

This Laboratory Grown Diamond (LGD) described in this Report has been analyzed, graded and Laserscribed® by International Gemological Institute (IGI). A LGD has essentially the chemical, physical and optical properties as a mined diamond, with the exception of being man-made (a manufactured product). LGD's are typically produced by CVD (chemical vapor deposition) or by HPHT (high pressure high temperature) growth processes and may include post growth modifications to change the color. IGI utilizes the most advanced techniques and equipment currently available including, binocular microscopes, diamond color masters, non-contact-optical measuring device, a wide range analytical techniques including FTIR, UV-VIS-NIR, raman spectroscopy, and fluorescence analysis at various excitation wavelengths. This Report includes advanced security features. This Report is neither a guarantee, valuation nor appraisal and by making the report IGI does not agree to purchase or resale the article.

For Terms & Conditions, please visit www.igi.org INTERNATIONAL GEMOLOGICAL INSTITUTE, INC



THE DOCUMENT WAS PRODUCED WITH THE FOLLOWING SECURITY MEASURES: SPECIAL DOCUMENT PAPER, INK SCREENS, WATERMARK BACKGROUND DESIGNS HOLOGRAM AND OTHER SECURITY FEATURES NOT LISTED AND DO EXCEED DOCUMENT SECURITY INDUSTRY GUIDELINES