



**INTERNATIONAL  
GEMOLOGICAL  
INSTITUTE**

**ELECTRONIC COPY**

**LABORATORY GROWN DIAMOND REPORT**

**LG450028941**

**IGI LABORATORY GROWN  
DIAMOND ID REPORT**

11/06/2020

IGI Report Number **LG450028941**

**SQUARE CUSHION MODIFIED  
BRILLIANT**

**5.28 x 5.26 x 3.30 MM**

Carat Weight 0.72 CARAT  
Color Grade E  
Clarity Grade VS 2  
Polish EXCELLENT  
Symmetry EXCELLENT  
Fluorescence NONE  
Inscription(s) LABGROWN IGI  
LG450028941

Comments: This Laboratory grown diamond was created by high pressure high temperature process (HPHT). Type II

**IGI GEMOLOGICAL REPORT**

**IGI LABORATORY GROWN DIAMOND IDENTIFICATION REPORT**

11/06/2020  
IGI Report Number LG450028941  
Shape and Cutting Style SQUARE CUSHION MODIFIED BRILLIANT  
Measurements 5.28 x 5.26 x 3.30 MM

**GRADING RESULTS**

Carat Weight 0.72 CARAT  
Color Grade E  
Clarity Grade VS 2

**ADDITIONAL GRADING INFORMATION**

Polish EXCELLENT  
Symmetry EXCELLENT  
Fluorescence NONE  
Inscription(s) LABGROWN IGI LG450028941

Comments: This Laboratory grown diamond was created by high pressure high temperature process (HPHT). Type II

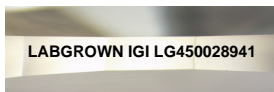


This Laboratory Grown Diamond (LGD) described in this Report has been analyzed, graded and Laserscribed® by International Gemological Institute (IGI). A LGD has essentially the chemical, physical and optical properties as a mined diamond, with the exception of being man-made (a manufactured product). LGD's are typically produced by CVD (chemical vapor deposition) or by HPHT (high pressure high temperature) growth processes and may include post growth modifications to change the color. IGI utilizes the most advanced techniques and equipment currently available including, binocular microscopes, diamond color masters, non-contact-optical measuring device, a wide range analytical techniques including FTIR, UV-VIS-NIR, raman spectroscopy, and fluorescence analysis at various excitation wavelengths. This Report includes advanced security features. This Report is neither a guarantee, valuation nor appraisal and by making the report IGI does not agree to purchase or replace the article.  
**INTERNATIONAL GEMOLOGICAL INSTITUTE, INC**

**ADDITIONAL INFORMATION**

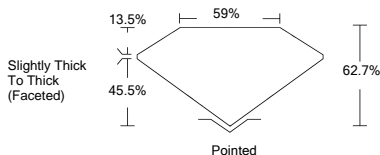


PHOTO ENLARGED



LABGROWN IGI LG450028941

**LASERSCRIBE<sup>SM</sup>**



**IGI LABORATORY GROWN  
DIAMOND ID REPORT**

11/06/2020

IGI Report Number **LG450028941**

**SQUARE CUSHION MODIFIED  
BRILLIANT**

**5.28 x 5.26 x 3.30 MM**

Carat Weight 0.72 CARAT  
Color Grade E  
Clarity Grade VS 2  
Polish EXCELLENT  
Symmetry EXCELLENT  
Fluorescence NONE  
Inscription(s) LABGROWN IGI  
LG450028941

Comments: This Laboratory grown diamond was created by high pressure high temperature process (HPHT). Type II

For Terms & Conditions, please visit [www.igi.org](http://www.igi.org)



THE DOCUMENT WAS PRODUCED WITH THE FOLLOWING SECURITY MEASURES: SPECIAL DOCUMENT PAPER, INK SCREENS, WATERMARK BACKGROUND DESIGNS HOLOGRAM AND OTHER SECURITY FEATURES NOT LISTED AND DO EXCEED DOCUMENT SECURITY INDUSTRY GUIDELINES