



LG457044937

**IGI LABORATORY GROWN
DIAMOND ID REPORT**

12/28/2020

IGI Report Number **LG457044937**

ROUND BRILLIANT

6.36 - 6.43 X 3.82 MM

Carat Weight	0.94 CARAT
Color Grade	D
Clarity Grade	VVS 2
Cut Grade	IDEAL
Polish	EXCELLENT
Symmetry	EXCELLENT
Fluorescence	NONE
Inscription(s)	LABGROWN IGI LG457044937

Comments: This Laboratory Grown Diamond was created by high pressure high temperature process (HPHT).
Type II

IGI GEMOLOGICAL REPORT

IGI LABORATORY GROWN DIAMOND IDENTIFICATION REPORT

12/28/2020
 IGI Report Number **LG457044937**
 Shape and Cutting Style **ROUND BRILLIANT**
 Measurements **6.36 - 6.43 X 3.82 MM**

GRADING RESULTS

Carat Weight **0.94 CARAT**
 Color Grade **D**
 Clarity Grade **VVS 2**
 Cut Grade **IDEAL**

ADDITIONAL GRADING INFORMATION

Polish **EXCELLENT**
 Symmetry **EXCELLENT**
 Fluorescence **NONE**
 Inscription(s) **LABGROWN IGI LG457044937**

Comments: This Laboratory Grown Diamond was created by high pressure high temperature process (HPHT).
Type II



ADDITIONAL INFORMATION

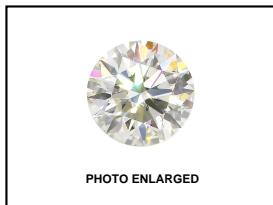
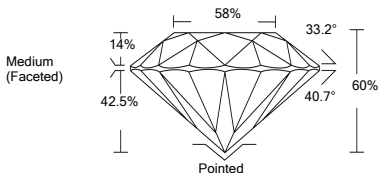


PHOTO ENLARGED



LABGROWN IGI LG457044937

LASERSCRIBE SM



**IGI LABORATORY GROWN
DIAMOND ID REPORT**

12/28/2020

IGI Report Number **LG457044937**

ROUND BRILLIANT

6.36 - 6.43 X 3.82 MM

Carat Weight	0.94 CARAT
Color Grade	D
Clarity Grade	VVS 2
Cut Grade	IDEAL
Polish	EXCELLENT
Symmetry	EXCELLENT
Fluorescence	NONE
Inscription(s)	LABGROWN IGI LG457044937

Comments: This Laboratory Grown Diamond was created by high pressure high temperature process (HPHT).
Type II



THE DOCUMENT WAS PRODUCED WITH THE FOLLOWING SECURITY MEASURES: SPECIAL DOCUMENT PAPER, INK SCREENS, WATERMARK BACKGROUND DESIGNS HOLOGRAM AND OTHER SECURITY FEATURES NOT LISTED AND DO EXCEED DOCUMENT SECURITY INDUSTRY GUIDELINES