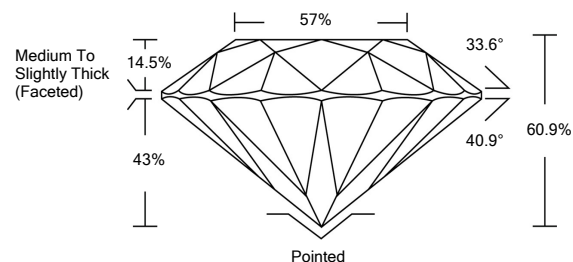




LG457063787

LABORATORY GROWN DIAMOND REPORT

PROPORTIONS



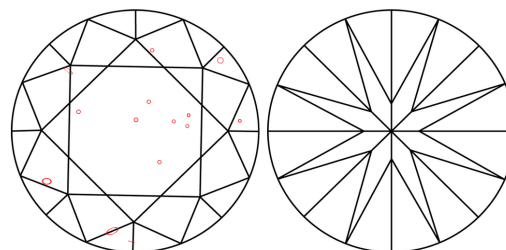
GRADING SCALES

Table with 5 columns for Color Grading Scale (CL to LT) and Clarity (10x) Grading Scale (FL to I).

The laboratory grown diamond described in this Report (Report) has been graded, tested, analyzed, examined and/or inscribed by International Gemological Institute (IGI). A laboratory grown diamond is one that has essentially the same chemical, physical and optical properties as a mined diamond...

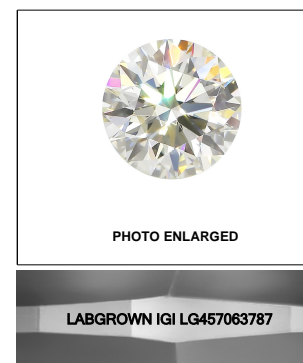
© INTERNATIONAL GEMOLOGICAL INSTITUTE, INC.

CLARITY CHARACTERISTICS



KEY TO SYMBOLS

Red symbols indicate internal characteristics. Green symbols indicate external characteristics.



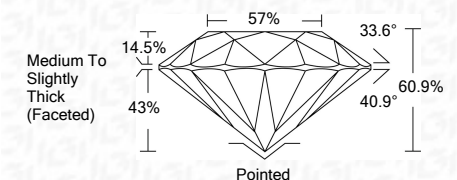
LASERSCRIBESM

01/06/2021

IGI Report Number: LG457063787
Shape and Cutting Style: ROUND BRILLIANT
Measurements: 6.90 - 6.92 x 4.21 mm

GRADING RESULTS

Carat Weight: 1.22 CARAT
Color Grade: G
Clarity Grade: SI 1
Cut Grade: IDEAL



ADDITIONAL GRADING INFORMATION

Polish: EXCELLENT
Symmetry: EXCELLENT
Fluorescence: NONE
Inscription(s): LABGROWN IGI LG457063787

Comments: This Laboratory Grown Diamond was created by Chemical Vapor Deposition (CVD) growth process. Type IIa

01/06/2021

IGI Report Number: LG457063787

Shape and Cutting Style: ROUND BRILLIANT

Measurements: 6.90 - 6.92 x 4.21 mm

GRADING RESULTS

Carat Weight: 1.22 CARAT

Color Grade: G

Clarity Grade: SI 1

Cut Grade: IDEAL

ADDITIONAL GRADING INFORMATION

Polish: EXCELLENT

Symmetry: EXCELLENT

Fluorescence: NONE

Inscription(s): LABGROWN IGI LG457063787

Comments: This Laboratory Grown Diamond was created by Chemical Vapor Deposition (CVD) growth process. Type IIa



IGI

01/06/2021
IGI Report No. LG457063787
ROUND BRILLIANT
6.90 - 6.92 x 4.21 mm
Carat Weight: 1.22 CARAT
Color Grade: G
Clarity Grade: SI 1
Depth: IDEAL
Table: 57%
Girdle: Medium To Slightly Thick (Faceted)
Culet: Pointed
Polish: EXCELLENT
Symmetry: EXCELLENT
Fluorescence: NONE
Inscription(s): LABGROWN IGI LG457063787
Comments: Laboratory Grown Diamond was created by Chemical Vapor Deposition (CVD) growth process. Type IIa