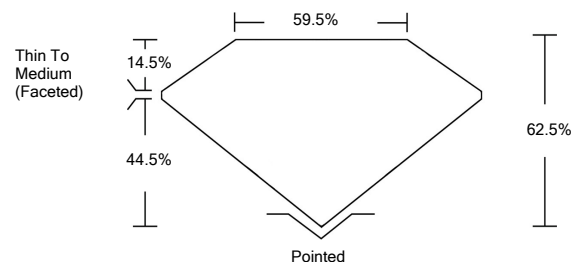




LG457074889

LABORATORY GROWN DIAMOND REPORT

PROPORTIONS



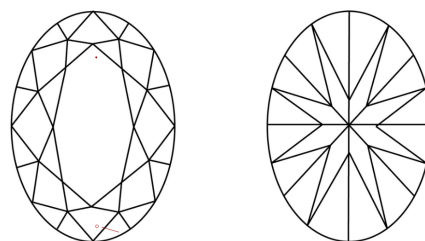
GRADING SCALES

Table with 5 columns for Color Grading Scale (CL, NC, FT, VLT, LT) and Clarity (10x) Grading Scale (FL, IF, VVS, VS, SI, I) with corresponding descriptions.

The laboratory grown diamond described in this Report (Report) has been graded, tested, analyzed, examined and/or inscribed by International Gemological Institute (IGI). A laboratory grown diamond is one that has essentially the same chemical, physical and optical properties as a mined diamond...

© INTERNATIONAL GEMOLOGICAL INSTITUTE, INC.

CLARITY CHARACTERISTICS



KEY TO SYMBOLS

Red symbols indicate internal characteristics. Green symbols indicate external characteristics.

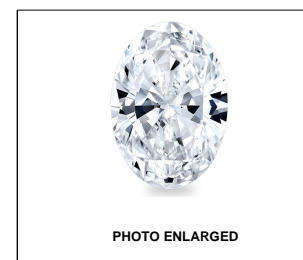


PHOTO ENLARGED



LASERSCRIBESM

01/07/2021

IGI Report Number LG457074889

Shape and Cutting Style OVAL BRILLIANT

Measurements 12.11 x 8.81 x 5.51 mm

GRADING RESULTS

Carat Weight 3.64 CARATS

Color Grade D

Clarity Grade VS 2

ADDITIONAL GRADING INFORMATION

Polish EXCELLENT

Symmetry EXCELLENT

Fluorescence NONE

Inscription(s) LABGROWN IGI LG457074889

Comments: As Grown - No indication of post growth treatment. This Laboratory Grown Diamond was created by High Pressure High Temperature (HPHT) growth process. Type II



IGI

Summary table of report details: IGI Report No. LG457074889, OVAL BRILLIANT, 12.11 x 8.81 x 5.51 mm, 3.64 CARATS, D, VS 2, EXCELLENT, EXCELLENT, NONE, LABGROWN IGI LG457074889.

