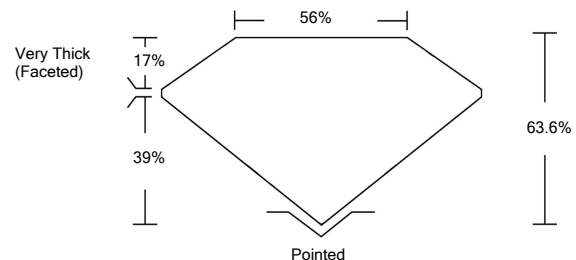




LG457075056

LABORATORY GROWN DIAMOND REPORT

PROPORTIONS



GRADING SCALES

Table with 5 columns for Color Grading Scale (CL, NC, FT, VLT, LT) and Clarity (10x) Grading Scale (FL, IF, VVS, VS, SI, I). Includes sub-labels like 'COLORLESS D-F', 'NEAR COLORLESS G-J', etc.

The laboratory grown diamond described in this Report (Report) has been graded, tested, analyzed, examined and/or inscribed by International Gemological Institute (IGI). A laboratory grown diamond is one that has essentially the same chemical, physical and optical properties as a mined diamond...

01/13/2021

IGI Report Number: LG457075056
Shape and Cutting Style: OVAL BRILLIANT
Measurements: 7.47 x 5.57 x 3.54 mm

GRADING RESULTS

Carat Weight: 1.00 CARAT
Color Grade: E
Clarity Grade: SI 2

01/13/2021
IGI Report Number: LG457075056

Shape and Cutting Style: OVAL BRILLIANT

Measurements: 7.47 x 5.57 x 3.54 mm

GRADING RESULTS

Carat Weight: 1.00 CARAT

Color Grade: E

Clarity Grade: SI 2

ADDITIONAL GRADING INFORMATION

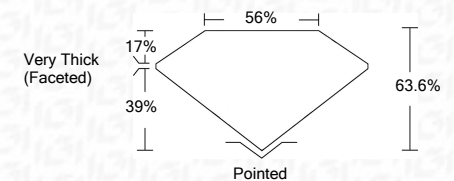
Polish: EXCELLENT

Symmetry: VERY GOOD

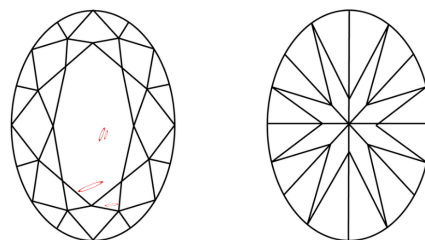
Fluorescence: NONE

Inscription(s): LABGROWN IGI LG457075056

Comments: This Laboratory Grown Diamond was created by High Pressure High Temperature (HPHT) growth process. Type II

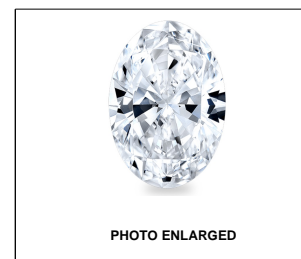


CLARITY CHARACTERISTICS



KEY TO SYMBOLS

Red symbols indicate internal characteristics.
Green symbols indicate external characteristics.



LASERSCRIBE SM

ADDITIONAL GRADING INFORMATION

Polish: EXCELLENT

Symmetry: VERY GOOD

Fluorescence: NONE

Inscription(s): LABGROWN IGI LG457075056

Comments: This Laboratory Grown Diamond was created by High Pressure High Temperature (HPHT) growth process. Type II



IGI

01/13/2021
IGI Report No. LG457075056
OVAL BRILLIANT
7.47 x 5.57 x 3.54 mm
1.00 CARAT
E
SI 2
63.6%
39%
Very Thick (Faceted)
Pointed
EXCELLENT
VERY GOOD
NONE
LABGROWN IGI LG457075056

This Laboratory Grown Diamond was created by High Pressure High Temperature (HPHT) growth process. Type II