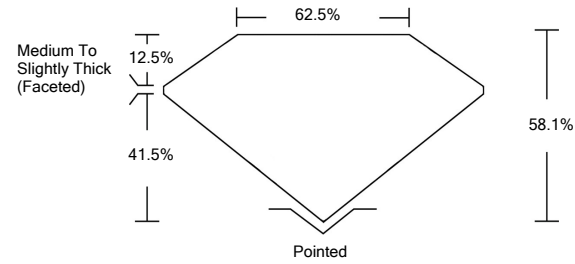




LG457085252

LABORATORY GROWN DIAMOND REPORT

PROPORTIONS



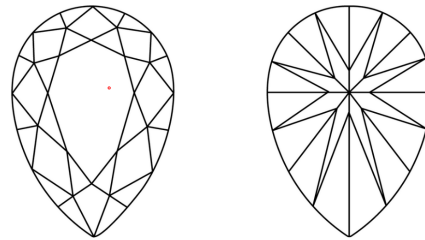
GRADING SCALES

Table with 5 columns for Color Grading Scale (CL, NC, FT, VLT, LT) and Clarity (10x) Grading Scale (FL, IF, VVS, VS, SI, I). Includes sub-labels like 'COLORLESS D-F', 'NEAR COLORLESS G-J', etc.

The laboratory grown diamond described in this Report (Report) has been graded, tested, analyzed, examined and/or inscribed by International Gemological Institute (IGI). A laboratory grown diamond is one that has essentially the same chemical, physical and optical properties as a mined diamond...

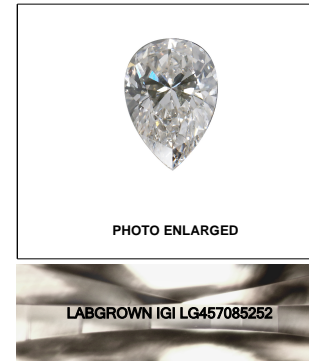
© INTERNATIONAL GEMOLOGICAL INSTITUTE, INC.

CLARITY CHARACTERISTICS



KEY TO SYMBOLS

Red symbols indicate internal characteristics. Green symbols indicate external characteristics.



LASERSCRIBESM

01/16/2021

IGI Report Number LG457085252

Shape and Cutting Style PEAR BRILLIANT

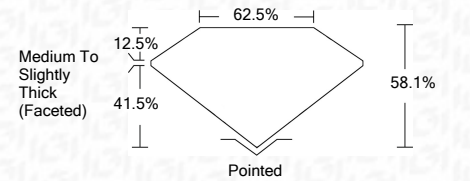
Measurements 9.71 x 5.83 x 3.39 mm

GRADING RESULTS

Carat Weight 1.18 CARAT

Color Grade I

Clarity Grade VS 1



ADDITIONAL GRADING INFORMATION

Polish EXCELLENT

Symmetry VERY GOOD

Fluorescence NONE

Inscription(s) LABGROWN IGI LG457085252

Comments: This Laboratory Grown Diamond was created by Chemical Vapor Deposition (CVD) growth process. Type IIa



IGI

01/16/2021 IGI Report No. LG457085252 PEAR BRILLIANT 9.71 x 5.83 x 3.39 mm 1.18 CARAT VS 1 EXCELLENT VERY GOOD NONE LABGROWN IGI LG457085252

This Laboratory Grown Diamond was created by Chemical Vapor Deposition (CVD) growth process. Type IIa

