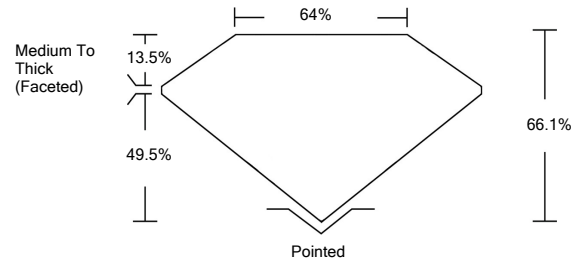




LG459100590

LABORATORY GROWN DIAMOND REPORT

PROPORTIONS



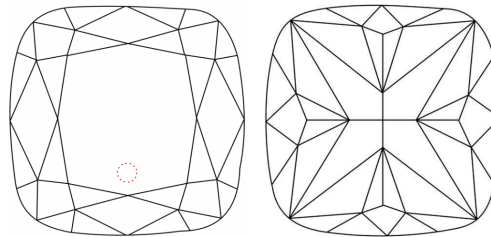
GRADING SCALES

Table with 5 columns for Color Grading Scale (CL, NC, FT, VLT, LT) and Clarity (10x) Grading Scale (FL, IF, VVS, VS, SI, I).

The laboratory grown diamond described in this Report (Report) has been graded, tested, analyzed, examined and/or inscribed by International Gemological Institute (IGI). A laboratory grown diamond is one that has essentially the same chemical, physical and optical properties as a mined diamond...

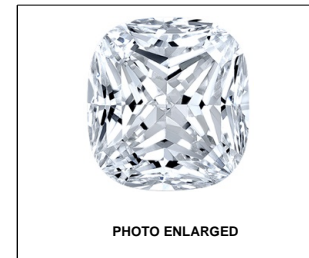
© INTERNATIONAL GEMOLOGICAL INSTITUTE, INC.

CLARITY CHARACTERISTICS



KEY TO SYMBOLS

Red symbols indicate internal characteristics. Green symbols indicate external characteristics.



LABGROWN IGI LG459100590

LASERSCRIBESM

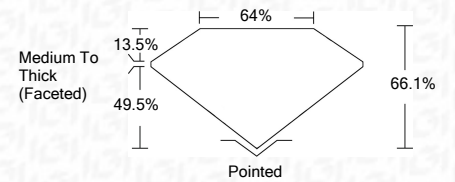
01/25/2021

IGI Report Number LG459100590
Shape and Cutting Style SQUARE CUSHION BRILLIANT

Measurements 7.49 x 7.19 x 4.75 mm

GRADING RESULTS

Carat Weight 2.01 CARATS
Color Grade I
Clarity Grade VS 2



ADDITIONAL GRADING INFORMATION

Polish VERY GOOD
Symmetry VERY GOOD
Fluorescence NONE
Inscription(s) LABGROWN IGI LG459100590

Comments: This Laboratory Grown Diamond was created by Chemical Vapor Deposition (CVD) growth process and may include post-growth treatment. Type IIa



IGI



01/25/2021
IGI Report No. LG459100590
SQUARE CUSHION BRILLIANT
7.49 x 7.19 x 4.75 mm
2.01 CARATS
Color Grade I
Clarity Grade VS 2
Depth 66.1%
Table 64%
Girdle Medium To Thick (Faceted)
Culet Pointed
Polish VERY GOOD
Symmetry VERY GOOD
Fluorescence NONE
Inscription(s) LABGROWN IGI LG459100590
Comments: This Laboratory Grown Diamond was created by Chemical Vapor Deposition (CVD) growth process and may include post-growth treatment. Type IIa