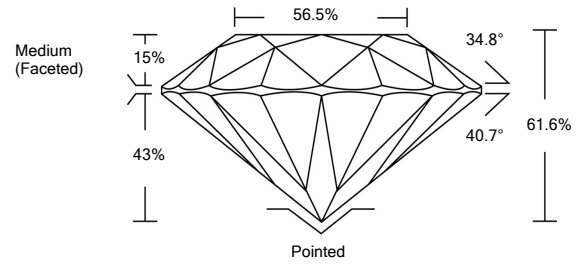




LG459119339

LABORATORY GROWN DIAMOND REPORT

PROPORTIONS



GRADING SCALES

COLOR GRADING SCALE	CL	NC	FT	VL	LT
	COLORLESS D-F	NEAR COLORLESS G-J	FAINT K-M	VERY LIGHT N-R	LIGHT S-Z
CLARITY (10X) GRADING SCALE	FL	VVS	VS	SI	I
	FLAWLESS INTERNALLY FLAWLESS	VERY VERY SLIGHTLY INCLUDED	VERY SLIGHTLY INCLUDED	SLIGHTLY INCLUDED	INCLUDED

The laboratory grown diamond described in this Report (Report) has been graded, tested, analyzed, examined and/or inscribed by International Gemological Institute (IGI). A laboratory grown diamond is one that has essentially the same chemical, physical and optical properties as a mined diamond, with the exception of being grown by man (a manufactured product). IGI employs and utilizes those techniques and equipment currently available to IGI, including, without limitation, 10X magnification, corrected triplet loupe, binocular microscope, master color comparison stones, non-contact-optical measuring device, Diamond Sure™, Diamond View™, Spectrophotometer and such other instruments and/or processes as deemed appropriate by IGI. This Report includes advanced security features. A duly accredited gemologist or jeweler can advise you with respect to the importance of and interrelationship between cut, color, clarity and carat weight. THIS REPORT IS NEITHER A GUARANTEE, VALUATION, NOR APPRAISAL OF THE GEMSTONE DESCRIBED HEREIN. PLEASE REVIEW THE LIMITATIONS AND RESTRICTIONS SET FORTH ONLINE. FOR ADDITIONAL INFORMATION, IMPORTANT LIMITATIONS AND DISCLAIMERS, PLEASE GO TO WWW.IGI.ORG OR CALL 1-888-BUY-IGIS.

© INTERNATIONAL GEMOLOGICAL INSTITUTE, INC.

01/29/2021

IGI Report Number LG459119339

Shape and Cutting Style ROUND BRILLIANT

Measurements 7.36 - 7.38 x 4.54 mm

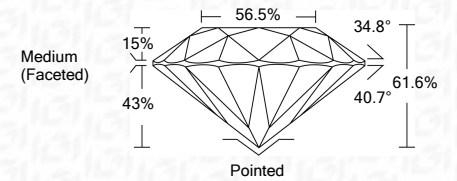
GRADING RESULTS

Carat Weight 1.52 CARAT

Color Grade E

Clarity Grade SI 2

Cut Grade IDEAL



CLARITY CHARACTERISTICS

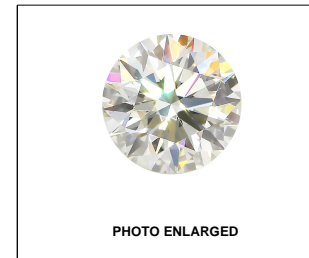
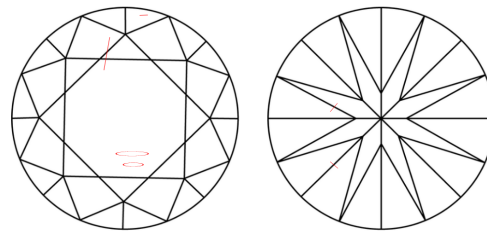


PHOTO ENLARGED

LABGROWN IGI LG459119339

LASERSCRIBE<sup>SM</sup>

KEY TO SYMBOLS

Red symbols indicate internal characteristics. Green symbols indicate external characteristics.

ADDITIONAL GRADING INFORMATION

Polish EXCELLENT

Symmetry EXCELLENT

Fluorescence NONE

Inscription(s) LABGROWN IGI LG459119339

Comments: As Grown - No indication of post-growth treatment. This Laboratory Grown Diamond was created by High Pressure High Temperature (HPHT) growth process.

01/29/2021

IGI Report Number LG459119339

Shape and Cutting Style ROUND BRILLIANT

Measurements 7.36 - 7.38 x 4.54 mm

GRADING RESULTS

Carat Weight 1.52 CARAT

Color Grade E

Clarity Grade SI 2

Cut Grade IDEAL

ADDITIONAL GRADING INFORMATION

Polish EXCELLENT

Symmetry EXCELLENT

Fluorescence NONE

Inscription(s) LABGROWN IGI LG459119339

Comments: As Grown - No indication of post-growth treatment.

This Laboratory Grown Diamond was created by High Pressure High Temperature (HPHT) growth process.



IGI

01/29/2021  
 IGI Report No. LG459119339  
 ROUND BRILLIANT  
 7.36 - 7.38 x 4.54 mm  
 Carat Weight 1.52 CARAT  
 Color Grade E  
 Clarity Grade SI 2  
 Cut Grade IDEAL  
 Depth 61.6%  
 Table 56.5%  
 Girdle Medium (Faceted)  
 Culet Pointed  
 Polish EXCELLENT  
 Symmetry EXCELLENT  
 Fluorescence NONE  
 Inscription(s) LABGROWN IGI LG459119339  
 Comments: No indication of post-growth treatment. This Laboratory Grown Diamond was created by High Pressure High Temperature (HPHT) growth process.