



LABORATORY GROWN DIAMOND REPORT

LG459120489

GRADING SCALES

Table with 5 columns for Color Grading Scale (CL, NC, FT, VLT, LT) and Clarity (10x) Grading Scale (FL, IF, VVS, VS, SI, I).

The laboratory grown diamond described in this Report (Report) has been graded, tested, analyzed, examined and/or inscribed by International Gemological Institute (IGI). A laboratory grown diamond is one that has essentially the same chemical, physical and optical properties as a mined diamond...

01/27/2021

IGI Report Number LG459120489
Shape and Cutting Style SQUARE CUSHION BRILLIANT

Measurements 8.53 x 8.13 x 5.13 mm

GRADING RESULTS

Carat Weight 3.05 CARATS
Color Grade J
Clarity Grade VS 1

01/27/2021
IGI Report Number LG459120489

Shape and Cutting Style SQUARE CUSHION BRILLIANT

Measurements 8.53 x 8.13 x 5.13 mm

GRADING RESULTS

Carat Weight 3.05 CARATS

Color Grade J

Clarity Grade VS 1

ADDITIONAL GRADING INFORMATION

Polish EXCELLENT

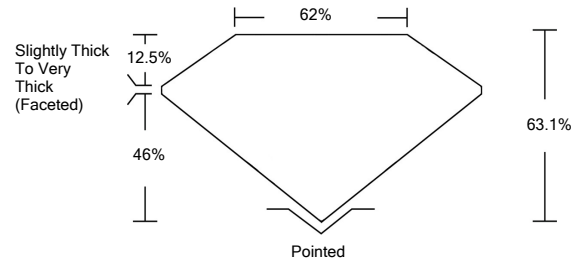
Symmetry EXCELLENT

Fluorescence NONE

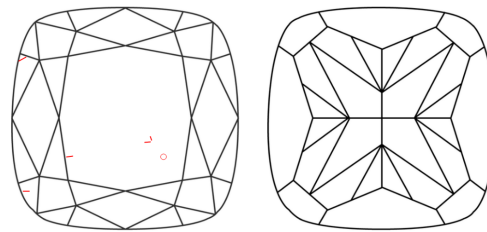
Inscription(s) LABGROWN IGI LG459120489

Comments: This Laboratory Grown Diamond was created by Chemical Vapor Deposition (CVD) growth process and may include post-growth treatment. Type IIa

PROPORTIONS

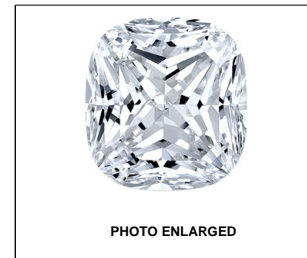


CLARITY CHARACTERISTICS



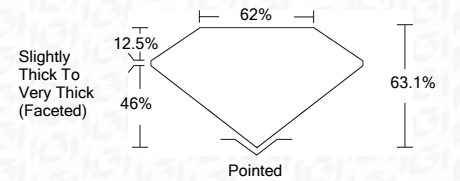
KEY TO SYMBOLS

Red symbols indicate internal characteristics.
Green symbols indicate external characteristics.



LABGROWN IGI LG459120489

LASERSCRIBE SM



ADDITIONAL GRADING INFORMATION

Polish EXCELLENT

Symmetry EXCELLENT

Fluorescence NONE

Inscription(s) LABGROWN IGI LG459120489

Comments: This Laboratory Grown Diamond was created by Chemical Vapor Deposition (CVD) growth process and may include post-growth treatment. Type IIa



IGI

01/27/2021
IGI Report No. LG459120489
SQUARE CUSHION BRILLIANT
8.53 x 8.13 x 5.13 mm
3.05 CARATS
Color Grade J
Clarity Grade VS 1
Depth 63.1%
Table 62%
Girdle Slightly Thick To Very Thick (Faceted)
Culet Pointed
Polish EXCELLENT
Symmetry EXCELLENT
Fluorescence NONE
Inscription(s) LABGROWN IGI LG459120489
Comments: This Laboratory Grown Diamond was created by Chemical Vapor Deposition (CVD) growth process and may include post-growth treatment. Type IIa