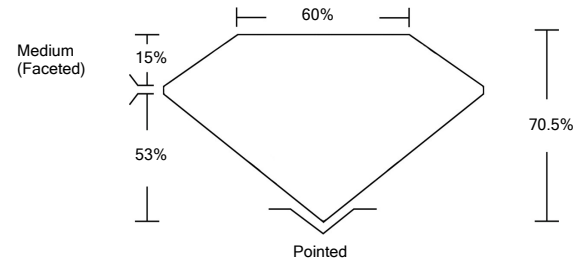




LG459121789

LABORATORY GROWN DIAMOND REPORT

PROPORTIONS

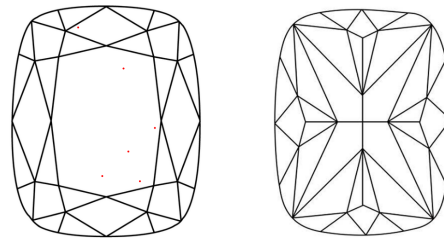


GRADING SCALES

Table with 5 columns for Color Grading Scale (CL, NC, FT, VLT, LT) and 5 columns for Clarity (10x) Grading Scale (FL, IF, VVS, VS, SI, I).

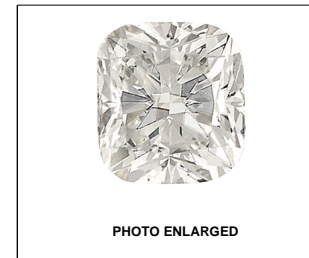
The laboratory grown diamond described in this Report (Report) has been graded, tested, analyzed, examined and/or inscribed by International Gemological Institute (IGI). A laboratory grown diamond is one that has essentially the same chemical, physical and optical properties as a mined diamond...

CLARITY CHARACTERISTICS



KEY TO SYMBOLS

Red symbols indicate internal characteristics. Green symbols indicate external characteristics.



LASERSCRIBESM

01/29/2021

IGI Report Number LG459121789

Shape and Cutting Style CUSHION MODIFIED BRILLIANT

Measurements 6.83 x 5.72 x 4.03 mm

GRADING RESULTS

Carat Weight 1.18 CARAT

Color Grade H

Clarity Grade VS 1

ADDITIONAL GRADING INFORMATION

Polish EXCELLENT

Symmetry EXCELLENT

Fluorescence NONE

Inscription(s) LABGROWN IGI LG459121789

Comments: This Laboratory Grown Diamond was created by Chemical Vapor Deposition (CVD) growth process and may include post-growth treatment. Type IIa



IGI

Summary table of report details: IGI Report No. LG459121789, CUSHION MODIFIED BRILLIANT, 6.83 x 5.72 x 4.03 mm, 1.18 CARAT, H, VS 1, 70.5% table, 60% depth, Medium (Faceted) cut, EXCELLENT polish and symmetry, NONE fluorescence, LABGROWN IGI inscription.

This Laboratory Grown Diamond was created by Chemical Vapor Deposition (CVD) growth process and may include post-growth treatment. Type IIa

