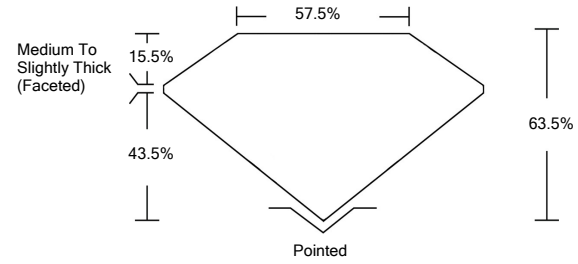




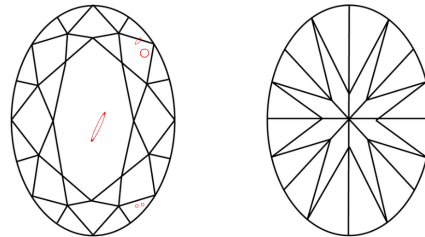
LG462140151

LABORATORY GROWN DIAMOND REPORT

PROPORTIONS



CLARITY CHARACTERISTICS



KEY TO SYMBOLS

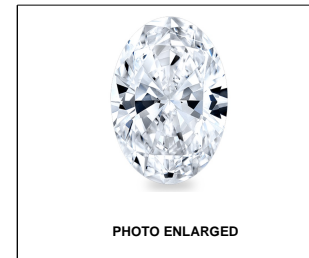
Red symbols indicate internal characteristics. Green symbols indicate external characteristics.

GRADING SCALES

Table with 5 columns for Color Grading Scale (CL to LT) and Clarity (10x) Grading Scale (FL to I). Includes sub-labels like 'COLORLESS D-F', 'NEAR COLORLESS G-J', etc.

The laboratory grown diamond described in this Report (Report) has been graded, tested, analyzed, examined and/or inscribed by International Gemological Institute (IGI). A laboratory grown diamond is one that has essentially the same chemical, physical and optical properties as a mined diamond...

© INTERNATIONAL GEMOLOGICAL INSTITUTE, INC.



LABGROWN IGI LG462140151

LASERSCRIBESM

02/09/2021

IGI Report Number LG462140151

Shape and Cutting Style OVAL BRILLIANT

Measurements 9.03 x 6.54 x 4.15 mm

GRADING RESULTS

Carat Weight 1.50 CARAT

Color Grade E

Clarity Grade SI 2

ADDITIONAL GRADING INFORMATION

Polish EXCELLENT

Symmetry EXCELLENT

Fluorescence NONE

Inscription(s) LABGROWN IGI LG462140151

Comments: As Grown - No indication of post-growth treatment.

This Laboratory Grown Diamond was created by High Pressure High Temperature (HPHT) growth process. Type II



IGI

Summary table of report details: IGI Report No. LG462140151, OVAL BRILLIANT, 9.03 x 6.54 x 4.15 mm, 1.50 CARAT, E, SI 2, 63.5% depth, 57.5% table, Medium To Slightly Thick (Faceted) girdle, Pointed pavilion, EXCELLENT polish and symmetry, NONE fluorescence, LABGROWN IGI LG462140151 inscription.

As Grown - No indication of post-growth treatment. This Laboratory Grown Diamond was created by High Pressure High Temperature (HPHT) growth process. Type II

