



IGI GEMOLOGICAL REPORT

IGI LABORATORY GROWN DIAMOND GRADING REPORT

02/27/2021

IGI Report Number LG462175165

Shape and Cutting Style SQUARE CUSHION MODIFIED BRILLIANT

Measurements 7.70 X 7.32 X 4.58 MM

GRADING RESULTS

Carat Weight 2.19 CARATS

Color Grade J

Clarity Grade VS 2

ADDITIONAL GRADING INFORMATION

Polish EXCELLENT

Symmetry VERY GOOD

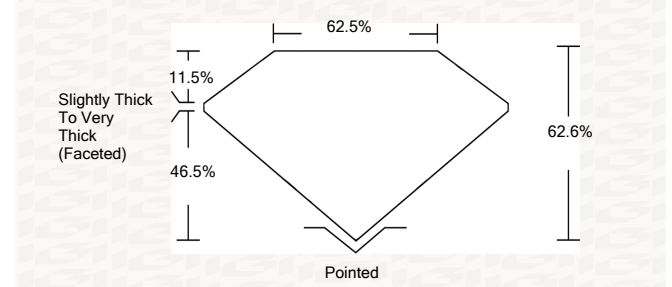
Fluorescence NONE

Inscription(s) LABGROWN IGI LG462175165

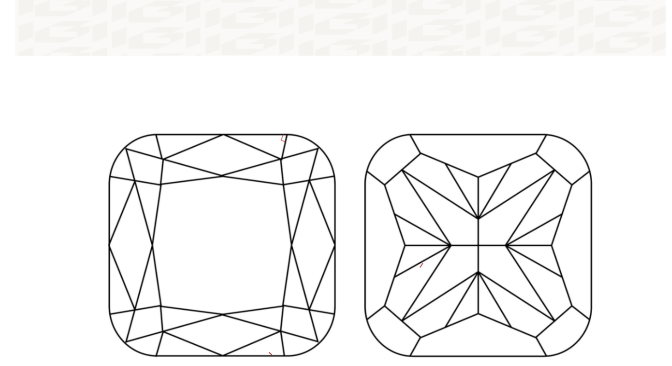
Comments: This Laboratory Grown Diamond was created by Chemical Vapor Deposition (CVD) growth process and may include post-growth treatment. Type IIa

ADDITIONAL INFORMATION

PROPORTIONS



CLARITY CHARACTERISTICS



KEY TO SYMBOLS

Red symbols indicate internal characteristics. Green symbols indicate external characteristics.

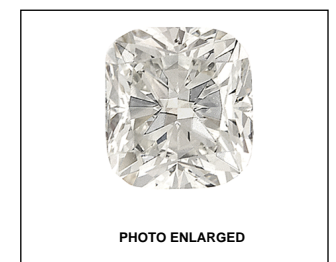
This Report is subject to the terms and conditions

© IGI 2000, edition 2019 all rights reserved.

GRADING SCALES

Table with 5 columns for Color Grading Scale (CL, NC, FT, VLT, LT) and Clarity (10x) Grading Scale (FL, IF, VVS, VS, SI, I). Includes sub-labels like 'COLORLESS D-F', 'NEAR COLORLESS G-J', etc.

The laboratory grown diamond described in this Report (Report) has been graded, tested, analyzed, examined and/or inscribed by International Gemological Institute (IGI). A laboratory grown diamond is one that has essentially the same chemical, physical and optical properties as a mined diamond...



LASERSCRIBE SM

IGI LABORATORY GROWN DIAMOND GRADING REPORT

02/27/2021

IGI Report Number LG462175165

Shape and Cutting Style SQUARE CUSHION MODIFIED BRILLIANT

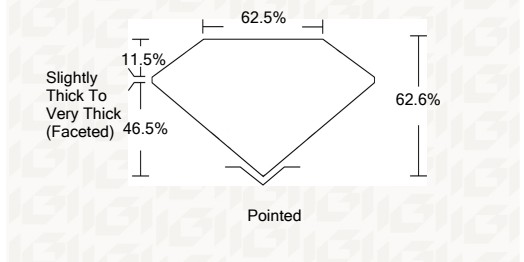
Measurements 7.70 X 7.32 X 4.58 MM

GRADING RESULTS

Carat Weight 2.19 CARATS

Color Grade J

Clarity Grade VS 2



ADDITIONAL GRADING INFORMATION

Polish EXCELLENT

Symmetry VERY GOOD

Fluorescence NONE

Inscription(s) LABGROWN IGI LG462175165

Comments: This Laboratory Grown Diamond was created by Chemical Vapor Deposition (CVD) growth process and may include post-growth treatment. Type IIa



IGI

Summary of report details including Report No, Shape, Measurements, Carat Weight, Color Grade, Clarity Grade, Polish, Symmetry, Fluorescence, and Inscription(s).